



**ST. VINCENT'S
UNIVERSITY HOSPITAL**
Elm Park



Nurse Education & Practice Development

Induction and Mandatory Training



Prospectus 2024

Information correct as of end December 2023



Nurse Education Centre
St. Vincent's University Hospital
Elm Park
Dublin 4



About St Vincent's University Hospital

St Vincent's Hospital was founded by Mother Mary Aikenhead foundress of the Religious Sisters of Charity and established at St Stephen's Green in 1834. The hospital transferred to its present site in Elm Park in 1970 and subsequently changed its title to St Vincent's University Hospital in 1999.

St Vincent's University Hospital
Elm Park
Dublin 4
Tel; (01) 221 4000
Email:
nurseeducationcentre@svuh.ie

St. Michael's Hospital, Dun Laoghaire was founded in 1876 and governed by the Sisters of Mercy. Transfer of ownership of St. Michael's to the Religious Sisters of Charity took place in March 2001 in exchange for the Children's Hospital, Temple Street.

St. Vincent's University Hospital is a major academic teaching hospital. We provide a front line emergency service and national/regional medical care at inpatient and outpatient level. St. Vincent's University Hospital provides in excess of forty medical specialities. The hospital has approx. 600 in-patient beds, incorporating 7-day, 5-day and day care options. St Vincent's University Hospital is a health promoting hospital. Education and research are major components of the philosophy of St. Vincent's University Hospital.

Facilities are provided for the academic and clinical training of medical students, nurses, laboratory technicians, research scientists, physiotherapists, occupational therapists, radiographers, medical social workers, dieticians and speech therapists. St Vincent's University Hospital is a NO SMOKING hospital. Visitors are prohibited from smoking on the premises.

Our Mission

St Vincent's Healthcare Group is a non-profit group that is trusted by patients to provide best care through an expert team with the right processes and resources, and an approach that ensures each patient has access to the right treatment.

1. Best patient care

We will provide the highest quality patient care, always recognising our values of human dignity, compassion, justice, quality and advocacy. We will treat patients with warmth, empathy and understanding and respect their concerns, feelings and expectations.

2. Best team and resources

We will strive to recruit and retain excellent people at all levels, and to ensure they work with modern and efficient facilities and technologies to deliver best outcomes for all our patients. We will deliver comprehensive programmes of research and education involving leading medical colleges.

3. Best processes

We will maintain a healthy and safe environment and provide a healthcare service that is efficient and cost-effective, so that we deliver the best possible return for monies invested. Our hospitals will be well managed and accredited to the best international standards.

4. Best approach

We support an integrated model of healthcare for Ireland and we recognise our responsibility to work with others to make that a reality and to ensure all patients have access to the right medical treatment regardless of race, religion or ability to pay

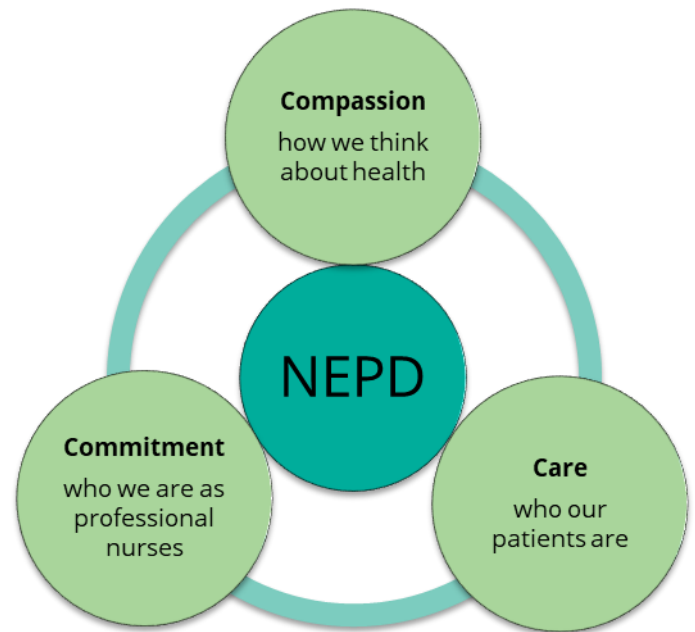


Ann Flynn
Director of Nursing

Nurse Education and Practice Development (NEPD) Philosophy

Underpinning our philosophy are the Nursing and Midwifery values of Compassion, Care and Commitment, whose associated behaviours are the essence of Nursing and Midwifery practice and form the basis for professional decision making and actions.

The Nurse Education and Practice Development Department philosophy is based on the three philosophical principles of Careful Nursing ©:



1. Understanding who we are as professional nurses

Patient safety and the delivery of high quality care by competent nurses is always the priority. Nursing education promotes lifelong learning and continual personal and professional development to enable nurses to be effective decision-makers in practice. We support, guide and encourage all nurses as they gain knowledge, skills and attitudes to be competent clinical practitioners using Biggs (1996) model of constructive alignment in curriculum design to develop all nursing education in this Centre.

2. Understanding who our patients are and the nature of our relationship with them

We have a strong team spirit and together we strive to create partnership with our patients, colleagues in the clinical areas and with all other disciplines to encourage a person-centred approach to care. We will continue to develop nursing practice with an enthusiastic and positive attitude and ensure the specific clinical education needs are analysed and addressed as they relate to each patient in our care.

3. Understanding how we think about health

Nurses as learners are self-motivated and engage proactively in their own learning. Learners are encouraged to build on their own body of knowledge based on individual experience and to apply this knowledge directly to the health care environment. We aspire to continually develop and maintain best practice in nursing and endeavour to promote continuous quality improvement in patient care.



Nursing Practice Development

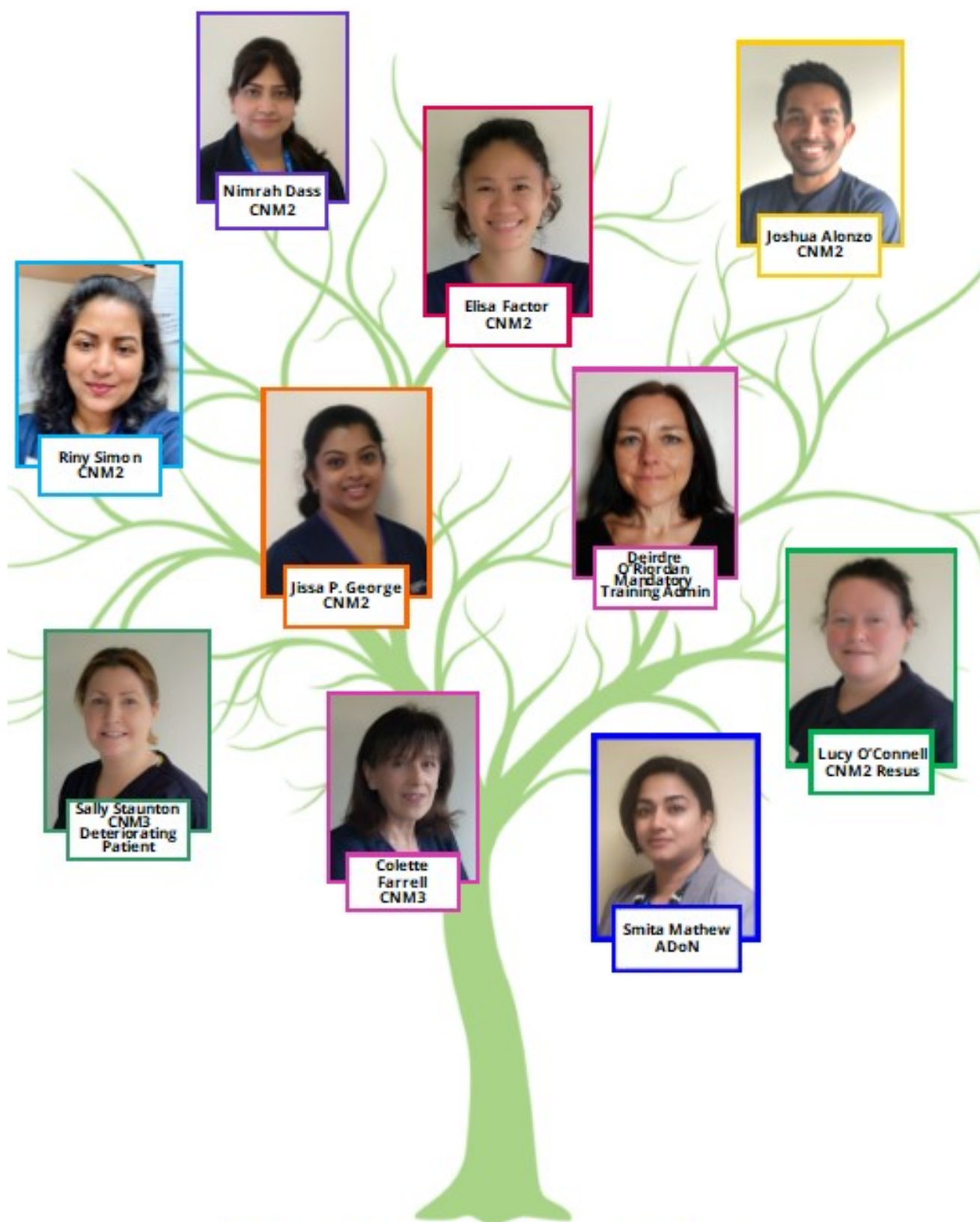
The Nursing Practice Development Department focuses on developing and supporting staff with evidence based practice standards across the hospital.

As an academic teaching hospital, we provide excellent clinical placements for undergraduate nursing students for the General Programme, the combined Children's' & General and Programmes and the Mental Health Nursing Programme. We have Clinical Placement Coordinators to support the students and help clinical staff provide a positive learning environment and culture of continuous education.

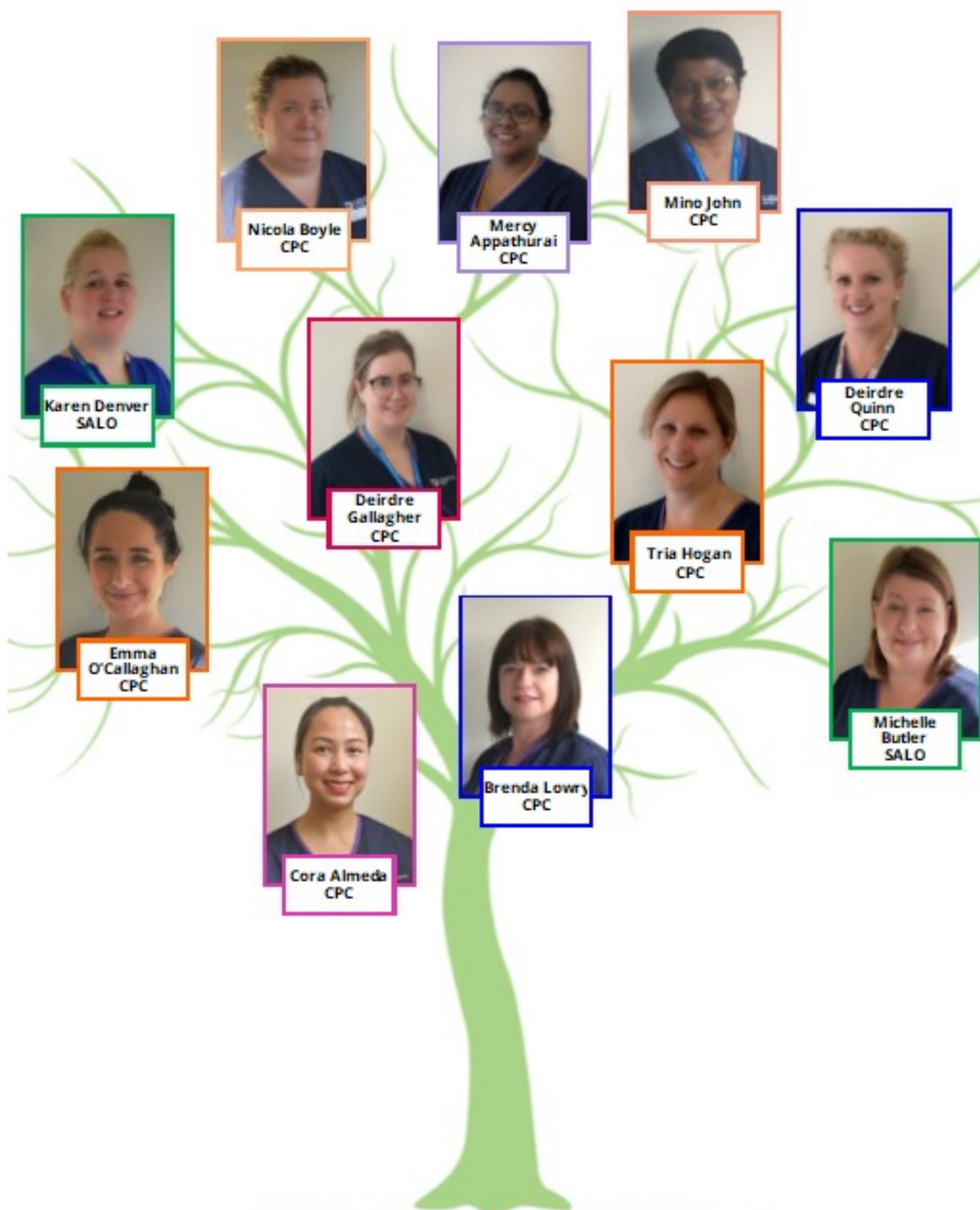
The Resuscitation training officers are also part of the nurse practice development team providing course participants with the knowledge and skills required to recognise when a person is in cardiac arrest, to activate the cardiac arrest team and to provide high quality CPR (cardiopulmonary resuscitation) and to use an AED (automated external defibrillator).

For qualified staff, the Nursing Practice Development team provide short skills based courses and ward based learning sessions and support. If you have a clinical query, we are at the end of the telephone and will do our best to point you in the right direction and address your learning needs. We have a wealth of up-to-date clinical policies, guidelines and procedures, which are evidence based and available on all computers in the hospital. New staff to the hospital are provided with a group orientation on their first day, followed by a variety of practice induction programmes, and we work with you to ensure it suits your individual needs.

There are opportunities for clinical staff to take on fixed term project work and develop a whole new range of skills.



Nurse Practice Development Team



**Clinical Placement Co-ordinators
&
Student Allocations Liaison Officers Team**

The following are Induction and Mandatory training required for Nursing, along with the following education provided by SVUH there are also mandatory HSE learning to undertake. A list of the Education and Training required, along with the renewal timeframe is on the last 2 pages of this document, allowing for printing and maintaining your own records of completion. This list is also available on Q-Pulse STAFF-ORG-97 SVUH Staff quick guide Mandatory Training Nursing & HCA and in the Nursing Induction Learning unit.

Contents

*For start dates,
please check our
monthly newsletter or
Contact the Course
Co-Ordinator, details
on the bottom of
each page*

Page:

9. Nurse Induction
9. New Graduate Induction
10. Practice Support Orientation
11. Overseas Adaptation Course
12. HCA Induction
13. Hospital Orientation for BSc Nursing Programme
SVHG (Stage 1 nursing students)
14. Resuscitation Training
15. Heartsaver CPR & AED Course
16. Basic Life Support (BLS) Healthcare Provider (HCP)
17. ACLS Experienced Provider
18. Advanced Cardiac Life Support (ACLS) Classroom based
19. Heartcode Advanced Cardiac Life Support (ACLS) (blended)
20. Careful Nursing Philosophy & Professional Practice Model- Theory & Practice
Programme
21. Enhanced Care Programme
22. Clinical Handover
23. Health Assessment
24. Safe Medication Administration Programme for Nurses
25. Intravenous Medication Administration Programme
26. Venepuncture and Cannulation Workshop
27. Enabling and Enhancing Quality of Care with the Person with Dementia, HSE
National Programme
28. Preceptorship in Practice
29. Education and Training required, check list

Nurse Induction

About

The aim of this induction is to provide registered nurse recruits, new to the hospital, with an introduction to some of the resources, processes, systems and people that will help them integrate into the Hospital. The *Nurse Induction Orientation Handbook* has been designed to further support and enhance this integration process.

Who is eligible?

Newly recruited registered nurses and 4th year Intern BSc nursing students.

How is it delivered?

This induction is delivered on-line.

Can external applicants apply?

This induction is for SVUH newly recruited nurses only.



Mandatory / Induction Hub

All mandatory online training & content relating to Induction.

New Graduate Induction

About

The purpose of this induction is to support the newly qualified nurse in the transition from student to registered nurse.

Who is eligible?

Newly registered and pre-registered nurses.

How is it delivered?

This induction is delivered on site with follow up in clinical area .

Can external applicants apply?

yes, once successfully recruited with SVUH.

For more details contact: Joshua Aletin , CNM2, (01) 2214268; joshuaalonzoaletin@svhg.ie

Nurse Induction

Cost:

Free for staff new to SVUH

Number of places

available: No maximum

Frequency:

Monthly

Closing Date:

One week prior to commencement

Duration:

4-5 hours to complete.

For more details contact on Nurse Induction:

Co-ordinator: Marie Daly, Ph: 01-2215614, Email: mariedaly@svhg.ie

Bookings: Made by HR directly to Coordinator

Practice Support Orientation

About

The Practice Support Programme is provided by St. Vincent's University Hospital to Registered Staff Nurses who have been employed and working in non-acute hospital settings and wish to make the transition to the acute setting. The programme takes five weeks to complete (including 1 week orientation/induction).

Who is it aimed towards?

Registered Staff Nurses employed in non-acute hospital settings (e.g. Nursing Homes).

How is it delivered?

A mixture of classroom based education sessions, simulation, workshops, online learning and clinical placement

Can external applicants apply?

Yes

Cost:

For costs details please enquire within the Nurse Education Centre

Number of places available:

Variable

Frequency:

Variable, on needs basis

Closing Date:

Not applicable

Duration:

5 weeks

For more details contact:

Co-ordinator: Elisa Monette Factor CNM2, (01)2214411; elisamonettefactor@svhg.ie

Overseas Adaptation Course

About

The Overseas Adaptation Course is provided by St. Vincent's University Hospital to Staff Nurses educated in non-EU countries. On completion of the course and once competency in the associated practice domains has been achieved, nurses become eligible to apply for Irish Nursing Registration with NMBI. Candidate Nurses remain supernumerary for the duration of the course. The course takes seven weeks to complete (including 1 week orientation/induction) but this can be extended to twelve weeks.

Who is it aimed towards?

Non-EU trained Staff Nurses

Who is eligible?

Non-EU trained staff nurses who possess temporary candidate registrations from NMBI

How is it delivered?

A mixture of classroom based education sessions, simulation, workshops, online learning and clinical placement

Can external applicants apply?

The Overseas Adaptation course is only available to staff recruited to work within St Vincent's University Hospital Group.



Cost:

For costs details please enquire within the Nurse Education Centre

Number of places available:

Variable

Frequency:

Variable, on needs basis

Closing Date:

Not applicable

Duration:

Seven weeks

- One week orientation
- 6 weeks clinical placement

For more details contact:

Co-ordinator: Elisa Monette Factor CNM2, (01)2214411;
elisamonettefactor@svhg.ie

Healthcare Assistant (HCA) Induction

About

The HCA Induction is available to all new Health Care Assistants in the hospital. It runs over two days. It is a combination of theory and workshops. The aim of the HCA Induction is to provide the knowledge and skills required to provide safe care to our patients.

Who is it aimed towards?

The induction is provided for all new HCAs in the hospital.

Who is eligible?

Health Care Assistants who are new to the hospital or those who are struggling with different aspects of their job role.

How is it delivered?

In-house

Can external applicants apply?

The HCA Induction is only available to new HCAs in SVUH.



Mandatory / Induction Hub

All mandatory online training & content relating to Induction.

Cost:

Free for internal applicants

Number of places available:

Minimum 5

Maximum 12

Frequency:

On-going as required

Closing Date:

Not applicable

Duration:

One day: 08.00-17.00

For more details contact:

Co-ordinator: Joshua Aletin , CNM2, (01) 2214268;
joshuaalonzoaletin@svhg.ie

Hospital Orientation for BSc Nursing Programme SVHG (Stage 1 nursing students)

About

Orientation days are run for the Stage 1 nursing students (General and Integrated Children's and General Programmes) on commencement of their first clinical placement in SVUH. These days include :

- Address from Director of Nursing
- Allocation of lockers
- Photographs and distribution of security badges
- Presentation re clinical placement and relevant hospital policies.
- Hand hygiene and standard precautions
- Training in Blood Glucose monitoring
- Hospital tour including orientation to clinical area on which the student will be on placement (Checklist to be completed)

Who is it aimed towards?

All Stage 1 BSc Nursing students on placement in SVUH

How is it delivered?

Classroom based delivery of presentations. Hospital tour included on the day to orientate students to SVUH clinical site.

Can external applicants apply?

Not applicable

Cost:

Free for internal applicants

Number of places available:

Numbers vary year on year

Frequency:

Three days annually

Closing Date:

N/A

Duration:

Seven hours

For more details contact:

Clinical Placement Co-ordinator:

Brenda Lowry, CPC, (01) 221 4874 b.lowry@svuh.ie

Resuscitation Training



- ⇒ Heartsaver CPR & AED Course
- ⇒ Basic Life Support (BLS) Healthcare Provider (HCP)
- ⇒ Heartcode BLS (blended)
- ⇒ Advanced Cardiac Life Support (ACLS) Classroom based
- ⇒ Heartcode Advanced Cardiac Life Support (ACLS) (blended)
- ⇒ ACLS Experienced Provider

Resuscitation training is provided to staff as identified in the SVUH resuscitation training policy and offered to other staff who express an interest to attend as agreed with their line manager.

The purpose of resuscitation training is to provide course participants with the knowledge and skills required to recognise when a person is in cardiac arrest, to activate the cardiac arrest team and to provide high quality CPR (cardiopulmonary resuscitation) and to use an AED (automated external defibrillator).

Course participants are taught how to recognise and treat a person who is choking. Course content varies depending on the level of training required and the role of the staff member within the organisation. American Heart Association / Irish Heart Foundation (AHA/IHF) certificates are awarded for the majority of courses as well as CEUs from the Nursing and Midwifery Board of Ireland and CPD points from the Royal College of Surgeons of Ireland.

Heartsaver CPR & AED Course

About

Classroom, video-based, Instructor led course that teaches Adult and Child CPR and AED use, Infant CPR, and how to revive choking in Adults and infants.

The course teaches skills with the AHA's research-proven practice-while-watching techniques which allows the instructor to observe the student, provide feedback and guide the students learning of skills. No written exam.

Who is it aimed towards?

Mandatory for all HCA s and Medical Social Workers, optional for Porters and Security.

Who is eligible?

Course is for SVUH ancillary staff only

How is it delivered?

Classroom based Instructor led course with aid of DVD
OR

Blended learning. Pre-course theory and test (84%) and instructor led skills practice and skills assessment.

Can external applicants apply?

Not open to external applicants



Cost:

Free

Number of places available:

6 per class

Frequency:

Twice a month

Duration:

Classroom based: 4.5 hours

Blended learning – Practical 1 hour

For more details contact:

Mandatory Training Administrator: Deirdre O'Riordan (01) 2214484 ; d.oriordan@st-vincent's.ie

Resuscitation Department: Lucy O'Connell, CNM2, (01) 2215292; lucy.oconnell@svhg.ie

Basic Life Support (BLS) Healthcare Provider (HCP)

About

Classroom-based, instructor-led, DVD practice-while-watching course. The course covers adult, child and infant, CPR, choking and use of Automated External Defibrillator (AED) and bag-valve-mask device (BVM). Successful completion of multiple choice question test (84%) and skills assessment required. An American Heart Association/Irish Heart Foundation certificate is issued and is valid for two years.

Who is it aimed towards?

Mandatory training. Required by all clinical staff with direct patient contact.

Who is eligible?

All clinical staff with direct patient contact.

How is it delivered?

The course can be completed two ways; online or classroom based.

Online

Blended. Pre-course theory and test (84%) and instructor led skills practice and skills assessment.

Classroom

Classroom-based, instructor led, theory and practice. Skills assessment and multiple choice question test. Pass mark 84%. Successful completion of both MCQ and Skills test required for certification.

Can external applicants apply?

BLS training is for SVUH clinical staff only



Cost:

Free for internal applicants

Number of places available:

On-line: 6 per class

Classroom: 6 per class

Frequency:

⇒ BLS HCP - Twice a month

⇒ BLS Skills Assessment -
Several times per week

Closing Date:

Not applicable

Duration:

⇒ Online

Online component approx. 1 ½ hours. Skills practice and skills assessment approx. 1 hour

⇒ Classroom

Approx. 5 hours

**NMBI
4 CEUs
RCSI
4.5 CPDs**

For more details contact:

Mandatory Training Administrator: Deirdre O'Riordan (01) 2214484; d.oriordan@st-vincents.ie

Resuscitation Department: Lucy O'Connell, CNM2, (01) 2215292; lucy.oconnell@svhg.ie

ACLS Experienced Provider

About

The aim of the ACLS Experienced Provider (ACLS-EP) Course is to improve outcomes in the complex cardiovascular, respiratory and other (ie metabolic, toxicological) emergencies by expanding on core ACLS guidelines and encouraging critical thinking and decision making strategies. Through instruction and active participation in case based scenarios, learners enhance their skills in the differential diagnosis and treatment of pre arrest or post arrest patients.

Who is it aimed towards?

The course is for seasoned/experienced healthcare providers who are proficient in performing BLS and ACLS skills, and interpreting ECGs, and understanding ACLS pharmacology and who regularly lead or participate in emergency assessment and treatment of peri arrest or post arrest patients.

Course prerequisites:

A current AHA BLS Certificate. Desirable current ACLS Provider Courses. Please note anyone who does not hold a current in date ACLS Certificate MUST pass all ACLS Provider skills assessments in order to proceed further in the ACLS EP Course.

How is it delivered?

Classroom-based, instructor-led with aid of DVD

Can external applicants apply?

This course is only open to SVUH clinical staff



Cost:

Free

Number of places available:

18 places available

Frequency:

Twice yearly

Closing Date:

Not applicable

Duration:

Approximately 7 hours

NMBI
7 CEUs

For more details contact:

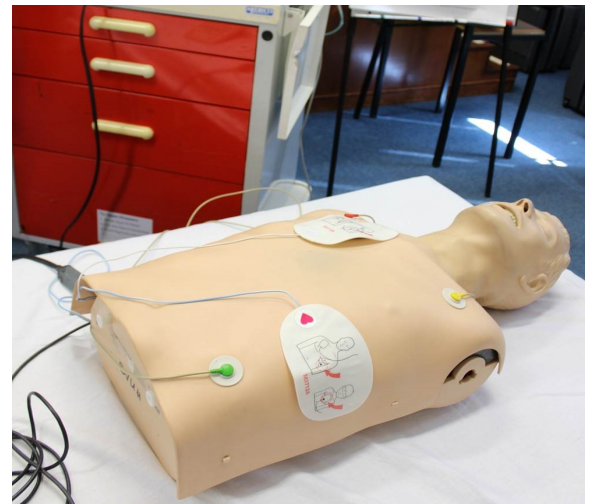
Mandatory Training Administrator: Deirdre O'Riordan (01) 2214484; d.oriordan@st-vincent's.ie

Resuscitation Department: Lucy O'Connell, CNM2, (01) 2215292; lucy.oconnell@svhg.ie

Advanced Cardiac Life Support (ACLS) Classroom based

About

Classroom-based, instructor-led theory and practice of peri arrest and cardiac arrest scenarios. Acute coronary syndromes, stroke, tachycardias, bradycardias and cardiac arrest scenarios are presented. Successful completion of multiple choice questions (84%) and skills assessment required. An American Heart Association/Irish Heart Foundation certificate is issued and is valid for two years.



Who is it aimed towards?

Mandatory training for those carrying cardiac arrest bleep and for staff working in Emergency Department, critical care areas and anaesthetics.

Who is eligible?

Staff carrying cardiac arrest bleep and for staff working in Emergency Department, critical care areas and anaesthetics. In date BLS is required to attend ACLS course.

How is it delivered?

Classroom-based, instructor led, practical. Pre-course reading required.

Can external applicants apply?

We are not currently offering the training to external applicants.

NMBI
18 CEUs
RCSI
16 CPDs

Cost:

No upfront cost for this course however internal medical staff must complete the HSE Clinical Course Refund Scheme form.

Internal nurses no charge.

Number of places available:

18 places available

Frequency:

As per service need

Closing Date:

Not applicable

Duration:

Approximately 22 hours

For more details contact:

Mandatory Training Administrator: Deirdre O'Riordan (01) 2214482; d.oriordan@st-vincent's.ie

Resuscitation Department: Lucy O'Connell, CNM2, (01) 2215292; lucy.oconnell@svhg.ie

Heartcode Advanced Cardiac Life Support (ACLS) (blended)

About

Blended course combining classroom-based, instructor-led practice and pre-course online theory. Content covers peri arrest and cardiac arrest scenarios. Acute coronary syndromes, stroke, tachycardias, bradycardias and cardiac arrest scenarios are presented. Successful completion of multiple choice questions (84%) and skills assessment required. An American Heart Association/Irish Heart Foundation certificate is issued and is valid for two years

Who is it aimed towards?

Mandatory training for those carrying cardiac arrest bleep and for staff working in Emergency Department, critical care areas and anaesthetics.

Who is eligible?

- ♦ Staff carrying cardiac arrest bleep and for staff working in Emergency Department, critical care areas and anaesthetics.

How is it delivered?

Blended learning, Online Course to be completed before a classroom based, instructor-led practical.

Can external applicants apply?

We are not currently offering the training to external applicants.

NMBI
6 CEUs
RCSI
16 CPDs



Cost:

No upfront cost for this course however internal medical staff must complete the HSE Clinical Course Refund Scheme form

Internal nurses no charge.

Number of places available:

18 places available

Frequency:

As per service need

Closing Date:

Not applicable

Duration:

Approximately 12 hours Online learning, 6 hours classroom led practical

For more details contact:

Mandatory Training Administrator: Deirdre O'Riordan (01) 2215292; d.oriordan@st-vincents.ie

Resuscitation Department: Lucy O'Connell, CNM2, (01) 2214234; lucy.oconnell@svhg.ie

Careful Nursing Philosophy & Professional Practice Model- Theory & Practice Programme

About

This course introduces the nurse to Careful Nursing in SVUH. This is an Irish Philosophy and a Professional Practice Model of nursing care created by Dr. Therese Meehan, and applied to the acute care setting.

The theory focuses on the Philosophy and Professional Practice Model, concentrating on two dimensions called the 'Therapeutic Milieu' and 'Practice Competence and Excellence'. It also introduces the use of standardised nursing languages called NANDA-I, NOC and NIC.

The workshop introduces care planning to develop skills and knowledge on identifying Nursing Diagnosis using NANDA-I, outcomes using NOC and evidence based interventions using NIC.

Who is it aimed towards?

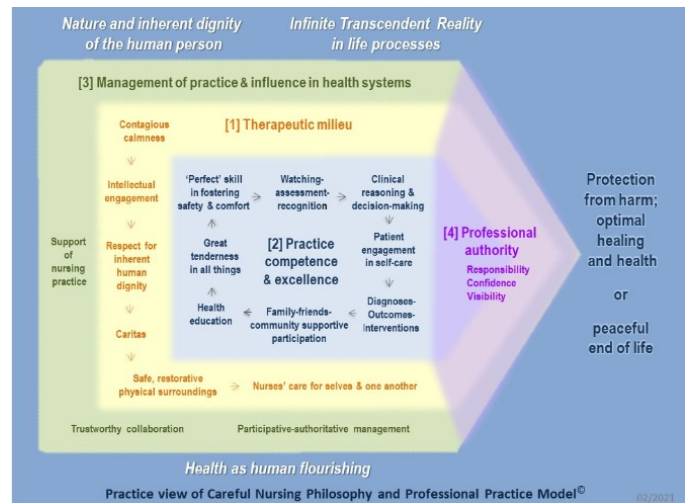
All newly joined nurses and nursing staff, including nursing students, working in Careful Nursing associated specialities and clinical areas within the organisation.

How is it delivered?

Blended learning; on-line, the five learning units are multi-model and comprise of evidence-based theory through accessing policies, guidelines and articles, relevant video clips, and are interspersed with quizzes and questions to test the participant's knowledge. Followed up with a workshop.

Refresher course

Careful Nursing refresher training session available for the nursing staff who have completed their Careful Nursing session in the previous years. The ward CNMs can email the staff details to the NPD careful nursing team



Cost:

Free for internal applicants. This course is only open to SVHG employees

Number of places available:

6-20 places available

Frequency:

Monthly

Closing Dates:

Two weeks prior to workshop in order to complete the learning units before attending

Duration:

Learning Units online 6 hours total and a 3 hour Workshop

NMBI
11 CEU's

For more details contact:

Co-ordinator: Jissa P George, CNM2, 01-2214268; JissaGeorge@svhg.ie

Bookings: Jissa P George, CNM2, 01-2214268; JissaGeorge@svhg.ie

Enhanced Care Programme

About

These four learning units and associated competence will assist the RGN in developing their knowledge, skills and attitude to care for patients requiring an enhanced level of care. Developing their understanding of the evidence-based principles and practice that is Enhanced Care and how to delegate care to HCAs within the enhanced care model.

Who is it aimed towards?

All nursing grades.

How is it delivered?

Blended learning; on-line learning units followed up with a clinical competency document

- ♦ LU-Nurse-00107 Fundamentals of Delirium
- ♦ LU-Nurse-00213 Falls and Harmful Falls-Prevention & Management
- ♦ LU-Nurse-00232 Intentional Rounding
- ♦ LU-Nurse-00285 Enhanced Care
- ♦ Competency Assessment

Once you have completed all four learning units the certificates are emailed to the co-ordinator. The co-ordinator will send a competency document to the staff. The nurse then links with the clinical assessor/ enhanced care champion who will arrange for your competency to be assessed. On completion of competency, please return your assessment booklet to the NEC for final certification.

Can external applicants apply?

Only SVUH staff can apply

ENHANCED CARE PATHWAY		AFFIX SMALL PATIENT LABEL HERE
SECTION C	AUTHORISATION AND RECOMMENDED LEVEL OF CARE INCLUDING DAILY REVIEW OF THE PATIENT	
	• TO BE COMPLETED AND AUTHORISED BY ADON / CNM 3 / OUT OF HOURS ADON AND PRIMARY CONSULTANT / REGISTRAR • SIGNATURE IS REQUIRED TO ENABLE THE CORRECT ALLOCATION OF RESOURCE TICK (✓) RECOMMENDED LEVEL OF CARE REQUIRED	
	LOW RISK Patient does not need designated HCA for enhanced care observation BUT is at an increased risk and must be monitored for changes in behaviours / risks	
	MEDIUM RISK Patient requires intermittent observation with 15 minutes checks and interaction, consider cohort. AUTHORISED BY: ADON / Out of Hours ADON / CNM 3	
SIGNATURE: _____ DATE & TIME: ____/____/____ : ____:____		
HIGH RISK All patients documented High Risk 1:1 require continuous observation within arm's length and in eyesight and hearing of the patient at all times. If this is contraindicated to patient care, a rationale must be clearly documented in the HCR by the primary team. AUTHORISED BY: ADON / Out of Hours ADON / CNM 3 AND PRIMARY CONSULTANT / REGISTRAR		
ADON / CNM 3 SIGNATURE: _____ DATE & TIME: ____/____/____ : ____:____		
CONSULTANT / REGISTRAR SIGNATURE: _____ DATE & TIME: ____/____/____ : ____:____		
DAILY REVIEW OF PATIENT ON THE ENHANCED CARE PATHWAY		

Cost:

Free for internal applicants

Number of places available:

Unlimited

Frequency:

As service require

Closing Dates:

N/A

Duration:

Learning Units online 8hr total

For more details contact:

Co-ordinator: Elisa Monette Factor CNM2, (01)2214411; elisamonettefactor@svhg.ie

Clinical Handover

About

The Clinical Handover learning unit is designed to enhance the learner's knowledge, understanding, and ability to perform an effective handover. This learning unit has been developed to support the implementation of recognised best practice communication tools. Such communication tools will enhance handover by providing staff with the necessary knowledge and skills to participate in an effective safe handover.

Who is it aimed towards?

All nursing grades.

Who is eligible?

All registered nurses and 4th year Intern BSc nursing students working in SVUH

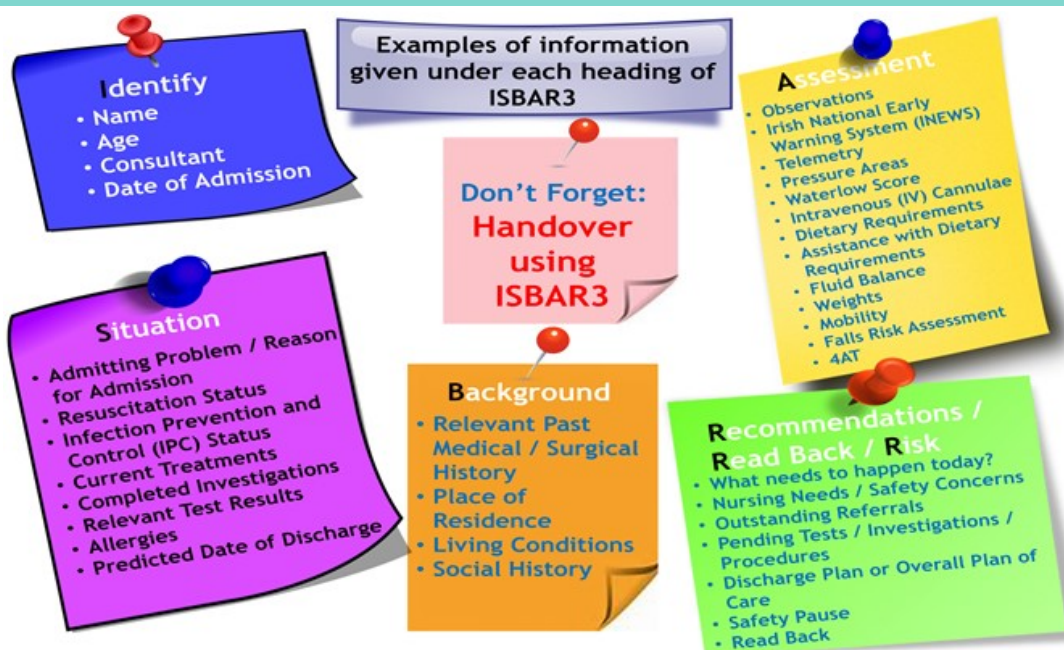
How is it delivered?

Complete the on-line learning unit:

LU-Nurse-00184 Nursing Clinical Handover

Can external applicants apply?

This course is only open to SVUH employees.



Cost:

Free

Number of places available:

Unlimited

Frequency:

Open access

Closing Date:

N/A

contact NPD for further details

Duration:

1 hours SDL online learning

For more details contact:

Coordinator: Elisa Monette Factor CNM2, (01)2214411; elisamonettefactor@svhg.ie

Health Assessment

About

The program is designed to enhance participants' knowledge, skills and ability in health assessment and documentation to post-registration nurses in St. Vincent's University Hospital. Successful completion of this program will enhance the quality patient care within the philosophy of St. Vincent's University Hospital and the Nurse Education Centre.

Who is it aimed towards?

All nursing grades.

Who is eligible?


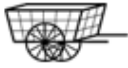
All registered nurses and 4th year Intern BSc nursing students working in SVUH .

How is it delivered?

Complete the on-line learning unit:
LU-Nurse-00119 Health Assessment
The learning unit incorporates a number of videos to aid in the assessment process and uses SVUH documentation.

an external applicants apply?

This course is only open to SVUH employees

Look	Listen	Feel	OLDCART
			

Cost:

Free

Number of places available:

Unlimited

Frequency:

Open access

Closing Date:

N/A

Duration:

3 hours SDL online learning

For more details contact:

Coordinator: Jody O'Reilly, CNM2, (01) 2214232; jody.oreilly@svuh.ie

Safe Medication Administration Programme for Nurses

About

The Safe Medication Administration Programme is four learning units aimed at enhancing nurses' knowledge, skills and understanding of evidence-based principles and practice in the safe administration of medications including controlled drugs.

Who is it aimed towards?

All registered general nurses new to SVUH.

Who is eligible?

All registered nurses working in SVUH and 4th year Intern BSc nursing students (4th year Intern BSc Nursing do not undertake the clinical competency in their internship it is completed on qualification and registration with NMBI).

How is it delivered?

Collect the Medication Round Assessment Booklet from the NEC reception.

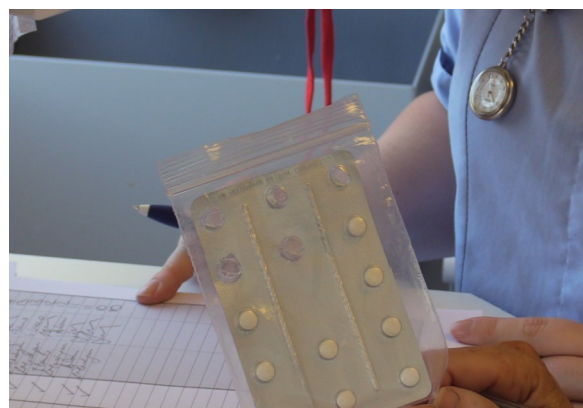
Complete the three on-line learning units:

- ♦ LU-Nurse-00105 Safe Medication Administration for Nurses
- ♦ LU-Nurse-00109 Safe use of Controlled Drugs
- ♦ HSELand Medicines Management

Undertake 10 supervised Medication rounds, completing the booklet. Return the completed medication round assessment booklet and all certificates from the four on-line units. Receive a certificate of competency.

Can external applicants apply?

This course is only open to SVHG employees



Cost:

Free

Number of places available:

Unlimited

Frequency:

Open access

Closing Date:

N/A

contact NEC reception for further details

Duration:

5 hours SDL online learning followed by clinical competency

For more details contact:

Coordinator: Joshua Aletin , CNM2, (01) 2214268; joshuaalonzoaletin@svhg.ie

Intravenous Medication Administration Programme

About

This course focuses on best practice and SVUH policy on the storage, preparation and administration of intravenous medication by nurses. It also examines the routes of intravenous administration (PVC, CVAD) and applies local policy in accessing and administering medication via these routes.

Who is it aimed towards?

Staff Nurses who are required to obtain competence in the administration of Intravenous Medications

Who is eligible?

These learning units are suitable for registered nurses.

How is it delivered?

All the theory is undertaken by the participant through self directed learning units via MyView and followed up with a practical workshop.

The on-line learning units are

- LU-Nurse-00101 Aseptic Non Touch Technique ANTT®
- LU-Nurse-00102 Intravenous Medication Administration Policy and Preparation of Intravenous Medications
- LU-Nurse-00103 Central Venous Access Devices (CVAD)
- LU-Nurse-00104 Intravenous Medication Calculations

All staff undertaking the IV Medication workshop are also required to complete: National Anaphylaxis Education Programme for healthcare professionals on HSEland. Clinical competence is to be achieved in order to obtain certification.

External applicants certificate of theory and attendance only.

Can external applicants apply?

Yes



Cost:

€85 for external applicants
Free for internal applicants

Number of places available:

12 places available

Frequency:

Monthly

Closing Date:

Two weeks prior to workshop in order to complete the learning units before attending

Duration:

5 hours SDL online learning followed by 4 hour workshop
8 weeks to complete clinical competency

NMBI
9 CEU's

For more details contact:

Co-ordinator: Maria Slattery, NT, m.slattery@svuh.ie
Or Jody O'Reilly, CNM2, (01) 221 4232; jody.oreilly@svuh.ie

Bookings: Ana Moreno, (01) 2214716; amoreno@svhg.ie

Venepuncture and Cannulation Workshop

About

The aim of this course is to assist the RGN in developing the skills necessary to perform Venepuncture and Cannulation in clinical practice

Who is eligible?

- This course is suitable for registered nurses who have completed an approved educational programme on the Management and Administration of Intravenous Medication (SVUH Certificate or Dublin Academic Teaching Hospitals - DATHs).
- Have obtained approval to undertake the programme from Clinical Nurse Manager (CNM) / Assistant Director of Nursing (ADON), as an appropriate person to expand their role to include peripheral Venepuncture and cannulation.

How is it delivered?

Blended learning approach, theoretical component of this programme completed on HSEland prior to workshop attendance.

They are listed as follows on HSEland:

- Performing Peripheral Intravenous Cannulation on an adult.
- Performing Venepuncture on an Adult

On site workshop followed by competency assessment at ward level. Full certification is awarded following completion of clinical competence at ward level.

Can external applicants apply?

Yes, but availability may depend on SVUH service need and associated demand for places.



Cost:

€85 for external applicants
Free for internal applicants

Number of places available:

6 places available

Frequency:

bi-monthly

Closing Date:

Two weeks prior to commencement

Duration:

3.5 hour workshop

NMBI
5 CEU's

For more details contact:

Co-ordinator: Marie Daly, Ph: 01-2215614, Email: mariedaly@svhg.ie

Bookings: Ana Moreno, (01) 2214716; amoreno@svhg.ie

Enabling and Enhancing Quality of Care with the Person with Dementia, HSE National Programme

About

This 4-hour education study morning has been developed as part of the National Dementia Project, Office of the Nursing and Midwifery Services Director, Health Service Executive. The philosophy is to promote excellence, innovation and creativity in supporting the person with dementia in the acute hospital setting. The aim is to raise awareness of the needs of the person with dementia in the acute care environment. Participants will be empowered to adopt person-centred care that brings together ideas and ways of working with the lived experience of people with dementia that emphasises communication and relationships.

Who is it aimed towards?

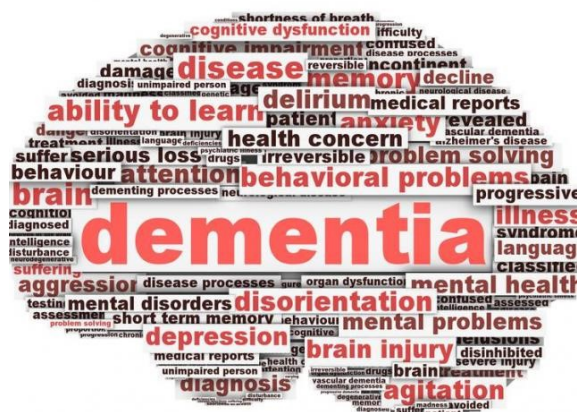
All staff working in St. Vincent's University Hospital

How is it delivered?

In-house, face-to-face classroom delivery by experts in education, and experts in clinical practice caring for older patients, and patients with dementia. The study morning is based around a DVD scenario of a person with dementia's experience of a hospital admission.

Can external applicants apply?

This study morning is for SVUH staff only.



Cost:

Free for internal applicants

Number of places available:

20 places available

Frequency:

Once every two months

Closing Date:

One week prior to commencement

Duration:

8.00am—12.00pm

NMBI
4 CEUs

For more details contact:

Co-ordinator: TBC

Bookings: Ana Moreno, (01) 2214716; amoreno@svhg.ie

Preceptorship in practice

About

To provide Registered Nurses with the skills to facilitate the Preceptorship and Assessment of BSc Nursing students using the National Competency Assessment Document.

The online component is updated every 2 years, the workshop is just once off.

Who is it aimed towards?

All Registered Nurses working in St. Vincent's University Hospital.

Who is eligible?

A Registered Nurse with at least 6 months post registration experience.

How is it delivered?

This is a blended learning approach. The online course 'Preceptorship in Practice' on HSEland must be completed prior to the workshop. The online course contains 3 modules and an assessment, it will take approximately 70 minutes. This is followed up with a 2.5 hour practical workshop facilitated by Clinical Placement Co-ordinators (CPC's).

Can external applicants apply?

Only SVUH registered nurses are eligible



Preceptorship in Practice

★★★★☆ 4 Reviews [Skip to Session](#)

The aim of this programme is to provide you with the relevant knowledge to be able to supervise and support a student during their practice placement.

Upon completion of this eLearning programme, learners are advised to attend a developmental workshop according to their local HEI and AHCP PPPGs.

This developmental workshop is generally coordinated by the local Centre's for Nursing and Midwifery Education (CNME's), Centre's for Midwifery Education (CME's), Centre of Children's Nurse Education (CCNE), or Centre's for Learning and Development (CLD's).

Learning Type: Programme

Available Languages: • English

Duration: 70 minutes

Support Contact: ONMSD: Glory George (Project Lead)
glory.george@hse.ie

Click on the Enrol button to enrol on the complete group of learning modules listed below.

Session(s): Preceptorship in Practice - Session1

Seats: Unlimited

Module 1: Introducing Preceptorship

Module 2: Supporting a Student on a Placement

Module 3: Supporting a Student Who is Not Achieving Competency

Preceptorship in Practice - Assessment

Cost:

Free

Number of places available:

12 places available

Frequency:

On-going . Course dates are circulated to the clinical areas in January.

Closing Date:

Three weeks prior to the workshop date

Duration:

Four hours; 1.5 hours SDL online followed by 2.5 hour workshop

NMBI

4.5 CEUs

For more details contact:

Bookings: Ana Moreno, (01) 2214716; amoreno@svhg.ie
Or your ward CPC

Nurse Education & Practice Development Training for Nursing and HCA

Nursing and HCA Mandatory and Health & Safety Training					
Training	Renewal	Duration	Access	Date completed	Date due next
Hand Hygiene	2 year	15 mins	MyView- Mandatory Hub		
Fire Safety	2 years	1 hr	MyView - Mandatory Hub		
Basic Life Support or Heartsaver	2 years	6 hrs	Mandatory Training Admin: Ext 4039		
Manual Handling or Patient Handling training module	3 years	45 mins	MyView- Mandatory Hub		
	3 years	2hrs	MyView- Mandatory Hub		
Be sharp Be safe	2 years	30 mins	MyView- Mandatory Hub		
Chemical Safety Awareness /Spills Control	2 years	1 hr	MyView- Mandatory Hub		
Healthcare Risk Waste Segregation Training	2 years	30 mins	MyView- Mandatory Hub		
Medical Gases for nurses, porters & HCA	1 year	30 minutes	MyView- Mandatory Hub		
Safe Transfusion Practice For Nursing or For HCA	3 years	2hrs Or 30 mins	MyView- Nursing Hub – Safe Transfusion Practice		
Introduction to behaviours that challenge	2 years	1hr	MyView- Mandatory Hub		
HSE An Introduction to Children First	3 years	1 ½ hrs	HSELand Submit cert in Mandatory Hub		
HSE Making Every Contact Count	Once off	8 x 30 mins	HSELand Submit cert in Mandatory Hub		
HSE Dignity at Work (Revised 2022)	3 years	40 mins	HSELand Submit cert in Mandatory Hub		
Data protection	2 years	30 mins	MyView- Mandatory Hub		
HSE Cyber Security Awareness	1 year	15 mins	HSELand Submit cert in Mandatory Hub		
HSE Open Disclosure: Module 1 Communicating effectively through Open Disclosure	Once off	40 mins	HSELand Submit cert in Mandatory Hub		
Dementia Awareness <i>Recommended</i>	Once off	1 day	Nurse Education Centre Phone Ext 4716		
Final Journeys <i>Recommended</i>	Once off	1day	Maureen O'Connell Ext 4080		

Nursing Continuing Professional Development Required Training				
Training	Renewal	Duration	Access	Date completed
HSE Introduction to the Irish National Early Warning System: Nursing/HSCP Focus	Once off	2 hrs	HSELand Submit cert in Nursing Hub	
HSE Introduction to Sepsis Management for Adults including Maternity	Once off	1 hrs	HSELand Submit cert in Nursing Hub	
Careful Nursing Programme	Once off	e-learning & 3 hr workshop	Nurse Education Centre: Ext 4716 MyView- Nursing Hub ➤ LU-NURSE-00153 ➤ LU-NURSE-00154 ➤ LU-Nurse-00155 ➤ LU-Nurse-00156 ➤ LU-Nurse-00157	
Enhanced Care ➤ Fundamentals of Delirium Falls and Harmful Falls- Prevention & Management ➤ Intentional Rounding ➤ Enhanced Care	Once off	3hrs e-learning & Competency Assessment	Nurse Education Centre: Ext 4716 MyView- Nursing Hub ➤ LU-NURSE-00107 ➤ LU-NURSE-00213 ➤ LU-Nurse-00232 ➤ LU-Nurse-00285	
Clinical Handover	Once off	30 mins	MyView- Nursing Hub LU-NURSE-00184	
Health Assessment	Once off	2.5 hrs	MyView- Nursing Hub LU-NURSE-00119	
Medication Safety ➤ Safe medication administration for nurses ➤ Safe use of controlled drugs (MDAs) ➤ Drug safety online ➤ HSE Medicines management	Once off	3.5 hrs e-learning & Competency Assessment	Nurse Education Centre: Ext 4716 MyView- Nursing Hub ➤ LU-NURSE-00105 ➤ LU-NURSE-00109 ➤ LU-NURSE-00108 ➤ HSELand	
HSE AMRIC Prevention of peripheral and central venous catheter related infections	Once off	e-learning	HSELand Submit cert in Mandatory Hub	
IV Medication Administration	Once off	5hrs e-learning & 4 hr workshop	Nurse Education Centre: Ext 4716	
Venepuncture & Cannulation	Once off	2hrs e-learning & 4 hr workshop	Nurse Education Centre: Ext 4716	
Irish Maternity Early Warning System (IMEWS) (area specific)	Once off	1 hr	HSELand	
Nursing and Midwifery Quality Care-Metrics	Once off	1 hr & local training	HSELand & link with area CPC	
Preceptorship	2 years (online)	70 mins & 2 hr workshop (once off)	HSELand & Nurse Education Centre: Ext 4716	

For more information on CPD programmes and short courses available please see the nurse education and practice development prospectus, available on the intranet or contact the Nurse Education Centre on ext.4716.

*Some of the above training is subject to maintaining competency, if competency lapses repeat of the programme may be required.