



**ST. VINCENT'S
UNIVERSITY HOSPITAL**
Elm Park



Nurse Education & Practice Development

Continuous Professional Development and Graduate Diploma Programmes

Prospectus 2024

Information correct as of end December 2023

Nurse Education Centre
St. Vincent's University Hospital
Elm Park
Dublin 4

Curriculum Framework

The starting point for creating learning opportunities is to clarify the competence or learning outcome that the person must demonstrate (Biggs, 1996; Botma, Van Rensburg, Coetzee, & Heyns, 2015). The process of competence is achieved by activating foundational knowledge, with procedural knowledge and conditional knowledge to become functional knowledge in performing the skill required (Biggs, 1996). Constructive alignment theory focuses on the learning system as a whole, the mechanism of aligning all of the components of learning activity that is systems of teaching, learning and assessing (Biggs & Tang, 2012).

In the context of post-registration continuing professional development learning will occur in a facilitative relationship where participant's will be given clear guidelines and objectives to develop or enhance identified skills and competencies (Timmins, 2008). The teachers will act as facilitators to learning, participant's will be provided with some learning sources but encouraged to also self-select additional sources and will also be required to self-assess during the process with a competency assessment at the summation (Mazmanian & Feldman, 2011; Murad, Coto-Yglesias, Varkey, Prokop, & Murad, 2010). In a professional capacity however, learning differs in that expectation of nurses' competency is pre-set and are required to perform at a specific competent level (Timmins, 2008).

Teaching and Learning

Creating active learning experiences is the role of the teacher. Participant focused teaching and active learning incorporates a variety of learning activities (Pickering and Roberts, 2018, Betihavas et al., 2016, te Pas et al., 2016). This process involves proving new material outside the classroom and face-to-face time is devoted to the application of knowledge to skills. This is the foundational principle on which a learning unit is built. The learning unit allows the participant to actively construct new knowledge at their own pace in an environment of their choosing. Selecting a learning unit to complete is done in collaboration with nurse managers, who determine appropriate units for their specific clinical environment. Some learning units are a precursor to commencing a skill that will require additional supervision and assessment to demonstrate competence in the clinical area. Other learning units are linked with a specified course and therefore embedded in additional assessments to amalgamate a number of units for incremental learning in a specialist area.

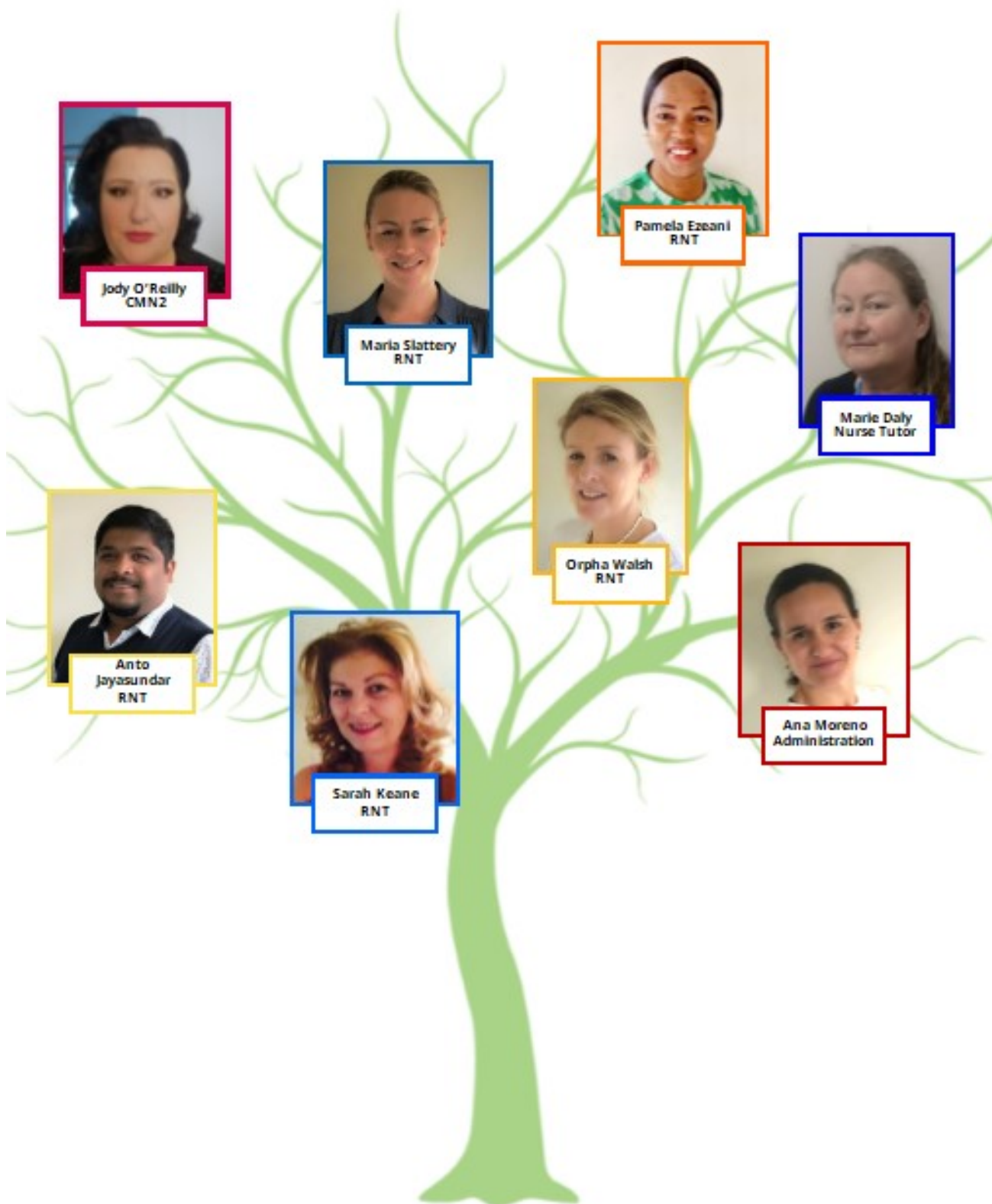
Nurse Education Centre

The aim of the Nurse Education Centre in St. Vincent's University Hospital is to ensure clinical practice is at the forefront of all nursing education. We value nursing professional development and provide education for all levels within the Nursing Department. We believe well educated and clinically strong nurses will deliver the highest standard of care for our patients. Our hospital mission and values help us put our patients at the centre of everything we do, by valuing human dignity, compassion, justice, quality and advocacy. Our collective mission is to strive to maintain excellence in clinical care, education and research.

What support is available?

All staff are encouraged to apply yearly to the Director of Nursing for assistance with funding and study leave for courses. We provide clinical support from senior nurses in the hospital called Clinical Facilitators. These nurses offer education and bedside support to help staff develop their knowledge and skills in clinical practice. Support is also available from the Clinical Nurse Specialists and Advanced Nurse Practitioners attached to each speciality.

In the Nurse Education Centre we have a group of experienced Registered Nurse Tutors who coordinate and teach a multitude of in-house and university accredited programmes, and are available to advise staff on their academic studies.



Nurse Education Team

Contents

Continuous Professional Development and Graduate Diploma in association with UCD



Nursing Hub

| Page | |
|-------|---|
| 6 . | Continuous Professional Development in Fundamentals of High Dependency Nursing |
| 7 . | Continuous Professional Development in Hepatology and Liver/Pancreas/Kidney Transplant Nursing |
| 8 . | Continuous Professional Development Foundation in Intensive Care Nursing |
| 9 . | Graduate Diploma Critical Care Nursing - Intensive Care |
| 10. | Continuous Professional Development in Cardiology Nursing Skills |
| 11. | Graduate Diploma Critical Care Nursing - Cardiovascular |
| 12. | Continuous Professional Development Acute Stroke Nursing |
| 13. | Continuous Professional Development in Emergency Nursing |
| 14. | Continuous Professional Development in Acute Medical Nursing |
| 15. | Graduate Diploma in Emergency Nursing |
| 16. | Continuous Professional Development in Cancer Nursing |
| 17. | Continuous Professional Development in Autologous Peripheral Blood Stem Cell Transplant (APBSCT) Nursing |
| 18. | Graduate Diploma in Cancer Nursing |
| 19. | Continuous Professional Development Nursing the Person in a Medical Environment |
| 20. | Continuous Professional Development in Care of the Older Person |
| 21. | Graduate Diploma in Gerontology Nursing |
| 22. | Continuous Professional Development in Dermatology Surgical Skills Nursing |
| 23. | Continuous Professional Development in Peri-Operative Nursing |
| 24. | Continuous Professional Development in Radiology Nursing |
| 25. | Graduate Diploma Nursing—Radiology |
| 26. | Continuous Professional Development in Surgical Nursing: Hepato-Pancreatic-Biliary (HPB) and Gastrointestinal (GI) Strand |
| 27-32 | Nurse Education and Practice Development Learning Units list |



SVUH and UCD provide graduate programmes to prepare nurses to excel as care-givers and as leaders. We have the largest graduate nursing and midwifery student population of any higher education institution in Ireland.

UCD has a reputation for academic excellence, quality teaching and innovative research, ensuring that students gain valuable knowledge and specialist skills which are current, relevant, marketable and responsive to community health care needs now and in the future.

Our graduates have gone on to assume key positions in the professions, both nationally and internationally.

Continuous Professional Development in Fundamentals of High Dependency Nursing (UCD Code NMHS33210)

About

This course is UCD accredited and runs over a period of 20 weeks. It is a blended-learning course, consisting of a number of online learning units with workshops, and consolidation of learning in clinical practice. Participants are supernumerary for a specified proportion of time throughout the course. Participants are clinically assessed three times. They also present a Poster Project at the end of the course, on an actual patient case or pertinent clinical situation, in order to demonstrate consolidation of learning.

Who is it aimed towards ?

Registered General Nurses (RGN) working in St. Brigid's Ward, St. Patrick's Ward or St. Joseph's Ward.

Who is eligible?

An RGN working in one of the above wards with approval from the CNM / ADoN to transfer into the ward's high dependency area (St. Brigid's HDU, St. Patrick's MOU, or St. Joseph's ACU) and undertake the course in order to expand their role to high dependency nursing.

How is it delivered?

- ◆ Self-directed online Learning Units
- ◆ Clinical Workshops
- ◆ Supervised Clinical Practice
- ◆ Clinical Educational Support

Can external applicants apply?

No.



Cost:

SVUH staff members do not incur any fees

Number of places available:

4-6 places

Frequency:

For dates contact the Nurse Education Centre

Closing Date:

Variable

Duration:

20 weeks

UCD accredited at
Level 8 (NFQ)
10 ECTS

For more details contact:

Coordinator: Maria Slattery, RNT, (01) 2213759; m.slattery@svuh.ie

Continuous Professional Development in Hepatology and Liver/Pancreas/Kidney Transplant Nursing (UCD Code NMHS32970)

About:

This CPD course is accredited by UCD and is designed to provide the participant with the core nursing knowledge and skills required to safely, professionally and holistically care for patients across the spectrum of liver disease, and patients requiring liver/pancreas/kidney transplant. Participants are clinically assessed three times during the course using an Assessment of Clinical Competencies framework. They also present a Poster Project at the end of the course, on an actual patient case or pertinent clinical situation, in order to demonstrate consolidation of learning.

Who is it aimed at:

All RGNs working on St. Brigid's Liver and Transplant Unit.

Who is eligible?

All nurses working on St. Brigid's Liver and Transplant Unit who express interest to the CNM2 or Clinical Facilitator, and are approved by the Assistant Director of Nursing.

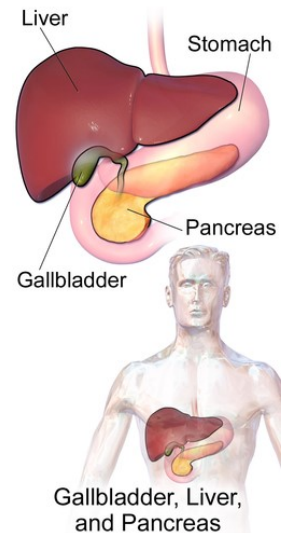
How is it delivered?

Blended learning course comprising:

- ◆ Self-directed online learning units
- ◆ Clinical skills workshops
- ◆ Clinical Simulated Scenarios
- ◆ Supervised clinical practice
- ◆ Clinical educational support

Can external applicants apply?

No.



Cost:

No fee incurred for St. Brigid's Liver and Transplant Unit RGNs

Number of places available:

Upwards of 6-10 places

Frequency:

For dates, contact the NEC

Closing Date:

Variable – contact Course Coordinator for further details

Duration:

26 weeks

UCD accredited at
Level 8 (NFQ)
10 ECTS

For more details contact:

Coordinator: Marie Daly, RT, 01-2215614, Email: mariedaly@svhg.ie

Continuous Professional Development in Foundation in Intensive Care Nursing (UCD Code NMHS532830)

About:

This course is accredited by UCD. It runs over a period of 26 weeks. It is a blended-learning course, consisting of a number of online learning units with workshops, and consolidation of learning in clinical practice. Participants are supernumerary for a specified time initially.

Participants are clinically assessed three times during the course using an Assessment of Clinical Competencies framework, a poster presentation and 500 word abstract.

Who is it aimed at:

Registered General Nurses (RGN) recruited to work in the Intensive Care Unit

Who is eligible?

Nurses on the live register with NMBI; RGNs new to the Intensive Care Unit

How is it delivered?

- ◆ Self-directed online learning units
- ◆ Clinical skills workshops
- ◆ Simulation scenarios
- ◆ Supervised clinical practice
- ◆ Clinical educational support

Can external applicants apply?

No. This course is only available to RGNs transferring from a general ward to work in ICU or who are specifically recruited as employees of SVUH to work in the Intensive Care Unit and undertake the course

On successful completion of the course, participants can apply for recognition of prior learning (RPL) for exemption from the 1st module when progressing to the Graduate Diploma in Critical Care Nursing – Intensive Care Course .



Cost:

SVUH staff members do not incur any fees

Number of places available:

6-16 places

Frequency:

For dates contact the Nurse Education Centre

Closing Date:

Variable

Duration:

26 weeks

UCD accredited at
Level 8 (NFQ)
10 ECTS

For more details contact:

Coordinator: Maria Slattery, RNT, (01) 2213759; m.slattery@svuh.ie

Graduate Diploma Critical Care Nursing - Intensive Care

Run in association with our education partner UCD

About

This programme is run in collaboration with our education partner, UCD. The Graduate Diploma Critical Care Nursing-Intensive Care provides the nurse with an opportunity to develop a greater understanding of the principles which underpin the various aspects of critical care nursing in relation to intensive care of critically ill patients. The students' knowledge and appreciation of nursing theory and biopsychosocial sciences, which underpin critical care nursing in intensive care, is augmented.

Who is eligible?

All applicants must:

- ♦ be on the live register maintained by the NMBI as a Registered General Nurse
- ♦ hold a primary degree (or equivalent) in nursing or a related discipline. APEL/RPL consideration if no degree.
- ♦ have one-year's post-registration experience
- ♦ be employed in the Intensive Care Unit and work a minimum of 78 hours per month

How is it delivered?

Six modules delivered using blended-learning format

Can external applicants apply?

The course is open to anyone working in an Intensive Care Unit nationally. Applications via UCD Central Applications: <http://www.ucd.ie/registry/admissions/apply.html>



Cost:

See UCD fees for further information

Number of places available:

20 places

Frequency:

September every year

Closing Date:

UCD: April each year

SVUH: February/March each year for fee sponsorship purposes

Duration:

One academic year

UCD accredited at
Level 9 (NFQ)
60 ECTS

For more details contact:

Co-ordinator UCD: Katie Wedgeworth

Co-ordinator SVUH: Maria Slattery, NT

For more information please see:
<http://www.nmhs.ucd.ie/study-with-us/graduate-programmes/courses/graduate-diploma-critical-care-nursing-intensive-care>

Continuous Professional Development in Cardiology Nursing Skills (UCD Code NMHS32890)

About

This course aims to advance each participant's body of knowledge, skills and attitudes in order to enable them to adopt a safe, therapeutic and holistic response to the care of the cardiology patient. It has been designed to guide cardiovascular nurses, working in any area of practice, to provide high quality nursing care to patients manifesting aspects of cardiovascular disease. Throughout the course, the participant will be afforded the opportunity to demonstrate their ability to link theory with practice and to demonstrate clinical competency in a number of clinical practices in the cardiology Department.

Who is eligible?

Registered General Nurses who are permanent members of staff working in the Cardiology Department, in St Vincent's University Hospital

How is it delivered?

- ♦ Self-directed online Learning Units
- ♦ Clinical Workshops & Simulation
- ♦ Supervised Clinical Educational Support in Practice

Cost:

SVUH staff members do not incur any fees

Number of places available:

6-12 places

Frequency:

Variable, contact the NEC for further information

Closing Date:

Variable

Duration:

26 weeks

UCD accredited at
Level 8 (NFQ)
10 ECTS

For more details contact:

Co-ordinator: Orpha Walsh, RNT, (01) 221 4548; o.walsh@st-vincent's.ie

Graduate Diploma Critical Care Nursing - Cardiovascular

Run in association with our education partner UCD

About

This programme is run in collaboration with our education partner, UCD. The Graduate Diploma Critical Care Nursing- Cardiovascular provides the nurse with an opportunity to develop a greater understanding of the principles which underpin the various aspects of critical care nursing in relation to cardiovascular care. The students' knowledge and appreciation of nursing theory and biopsychosocial sciences, which underpin critical care nursing practice in a cardiovascular setting, is augmented.

Who is eligible?

All applicants must ;

- ♦ be on the live register maintained by the NMBI as a Registered General Nurse
- ♦ hold a primary degree (or equivalent) in nursing or a related discipline. APEL/RPL consideration if no degree.
- ♦ have one-year's post-registration experience
- ♦ be employed in the Cardiology Department and work a minimum of 78 hours per month

How is it delivered?

Six modules delivered using blended-learning format

Can external applicants apply?

The course is open to anyone working in a Cardiology Department nationally. Applications via UCD Central Applications: <http://www.ucd.ie/registry/admissions/apply.html>

For more details contact:

Co-ordinator UCD: Dr Leona Bannon

Co-ordinator SVUH: Orpha Walsh, Registered Nurse Tutor
(01) 221 4548; o.walsh@st-vincent's.ie

For more information please see:
UCD: SVUH: <http://www.nmhs.ucd.ie/study-with-us/graduate-programmes/courses/graduate-diploma-critical-care-nursing->



Cost:

See UCD fees for further information

Number of places available:

20 places

Frequency:

September every year

Closing Date:

UCD April each year

SVUH: February/March each year
for free sponsorship purposes

Duration:

One academic year

UCD accredited at
Level 9(NFQ)

Continuous Professional Development in Acute Stroke Nursing (UCD Code NMHS32960)

About

The principal aims of this course are to advance each participant's body of knowledge, skills and attitude, to care for the Hyper Acute /Acute Stroke patient both safely, effectively and holistically. It is expected that upon completion of this course, the participant will be able to;

- a) Prioritize care for the Hyper Acute stroke patient and to provide safe, effective and evidence based care for the acute stroke patient and their families.
- b) Identify acute stroke patients at risk of developing complications following stroke and select the appropriate nursing interventions to reduce these risks and to maintain and or improve cerebral blood flow.

Who is eligible?

Registered General Nurses who are permanent members of staff working on Our Lady's Ward, in St Vincent's University Hospital .

How is it delivered?

Self-directed online Learning Units

Clinical Workshops & Simulation

Supervised Clinical Educational Support in Practice



Cost:

SVUH staff members do not incur any fees

Number of places available:

6-12 places

Frequency:

Variable, contact the NEC for further information

Closing Date:

Variable, contact the NEC for further information

Duration:

26 weeks

UCD accredited at
Level 8 (NFQ)
10 ECTS

For more details contact:

Co-ordinator: Orpha Walsh, RNT, (01) 221 4548; o.walsh@st-vincent's.ie

Continuous Professional Development in Emergency Nursing (UCD Code NMHS32130)

About

Focus is on preparation of RN's to safely and competently care for patients presenting to the Emergency Department. The Course is in a Blended Learning Format, consisting of a variety of learning methods and delivery ~ online learning units (to develop knowledge); skills workshops (to develop individual clinical skills); clinical simulated facilitated clinical practice

Who is eligible?

- ♦ An RGN currently registered with NMBI
- ♦ Work in Emergency Department

How is it delivered?

There is an emphasis on self-directed learning, with facilitation, guidance and support by the Clinical Facilitators, Nurse Tutor, Senior Clinical RN's & Managers as you navigate through the various learning experiences.

Can external applicants apply?

No.

The vision is for this CPD Course to be utilised as part of a Specialist Pathway, whereby RN's completing it can progress onwards in their career journey later to complete a Graduate Diploma in Emergency Nursing.



Cost:

SVUH staff members do not incur any fees

Number of places available:

5-10 places

Frequency:

For dates contact the Nurse Education Centre

Closing Date:

variable

Duration:

24 weeks

UCD accredited at
Level 8 (NFQ)
10 ECTS

For more details contact:

Co-ordinator: Anto Jayasundar, NT, (01)221 4543 , ajjayasundar@svhg.ie

Continuous Professional Development in Acute Medical Nursing (UCD code NMHS33590)

An tAonad Measúnaithe Géarmhíochaine Acute Medical Assessment Unit

About:

Focus is on preparation of RN's to safely and competently care for patients presenting to the Acute Medical Unit. The Course is in a Blended Learning Format, consisting of a variety of learning methods and delivery ; online learning units (to develop knowledge); skills workshops (to develop individual clinical skills); clinical simulated facilitated clinical practice

Who is it aimed at:

Registered General Nurses (RGN)

Who is eligible?

An RGN currently working in the Acute Medical Unit

How is it delivered?

There is an emphasis on self-directed learning, with facilitation, guidance and support by the Clinical Facilitators, Nurse Tutor, Senior Clinical RN's & Managers as you navigate through the various learning experiences.

Can external applicants apply?

No, the programme is designed to meet local service-needs.

Cost:

SVUH staff members do not incur any fees

Number of places available:

6 places

Frequency:

for dates contact the Nurse Education Centre

Closing Date:

Variable

Duration:

24 weeks

UCD accredited at
Level 8 (NFQ)
10 ECTS

For more details contact:

Coordinator: Anto Jayasundar, NT, (01)221 4543, ajjayasundar@svhg.ie

Graduate Diploma in Emergency Nursing

Run in association with our education partner UCD

About

The Graduate Diploma Emergency Nursing (Adult) is run in collaboration with our education partner UCD. It aims to build upon and advance the emergency nurse's repertoire of knowledge, skills, attitudes and professional values. The course aims to develop the clinician's capacities for caring and competent practice in emergency nursing, in order to prepare the nurse to provide a patient-focused, best-practice service within the acute health care delivery service.

Who is eligible?

All applicants must:

- ♦ be on the live register maintained by the NMBI as a Registered General Nurse
- ♦ hold a primary degree in Nursing (or equivalent in related discipline)/APEL consideration if no degree
- ♦ have at least six month's experience in emergency nursing and one year's acute medical /surgical ward experience
- ♦ be employed in an Emergency Department prior to commencing the course and for the duration of the course

How is it delivered?

Six modules delivered using blended-learning format, which are held in SVUH, the Mater Hospital and UCD.

Can external applicants apply?

This course is open to anyone working in an emergency department nationally. Applications via UCD Central Applications: <http://www.ucd.ie/registry/admissions/apply.html>

For more information please see:
UCD: SVUH: <http://www.nmhs.ucd.ie/study-with-us/graduate-programmes/>



Cost:

See UCD fees for further information

Number of places available:

Variable

Frequency:

September every year

Closing Date:

UCD: April each year

SVUH: February/March each year for fee sponsorship purposes

Duration:

One academic year

UCD accredited at
Level 9(NFQ)
60 ECTS

For more details contact:

Co-ordinator UCD: Wayne Thompson
wayne.thompson@ucd.ie
School of Nursing, Midwifery and
Health Systems | University College
Dublin 4 | D04 V1W8
Tel: (01) 716 6446
Co-ordinator SVUH: Nurse Tutor Anto
Jayasundar, NT, (01)221 4543, aj-jayasundar@svuhg.ie

Continuous Professional Development in Cancer Nursing

(UCD Code NMHS32870)

About

This is a 6 month programme which has been designed to provide the participant with the core nursing skills required to safely, professionally and holistically care for patients with cancer. On course completion, the participant will be able to demonstrate her/his role in relation to patient-centeredness, patient safety, professional accountability and the need for accurate communication with all members of the multidisciplinary team, patients and their families.

It covers theory and practice of cancer nursing. It combines self-directed learning units (Via Moodle), clinical skills workshops and supervised clinical practice. Theoretical and clinical assessment is undertaken during the programme.

Who is it aimed towards?

Registered Nurses who are new to Cancer Nursing, or who wish to advance their theoretical knowledge and clinical skills in cancer care.

Who is eligible?

Registered General Nurses (RGNs). Participants must work within the specialist cancer clinical area for the duration of the course in order to obtain the required competency.

How is it delivered?

- ♦ Learning Units
- ♦ Workshops
- ♦ Clinical learning
- ♦ Clinical educational support

Can external applicants apply?

Only SVUH staff can apply

Cost:

SVUH staff members do not incur any fees

Number of places available:

6-10 places

Frequency:

For dates contact the Nurse Education Centre

Closing Date:

Variable

Duration:

26 weeks

UCD accredited at
Level 8 (NFQ)
10 ECTS

For more details contact:

Co-ordinator: Sarah Keane, RNT, skeane@svhg.ie

Continuous Professional Development in the Nursing Care of the Patient Receiving an Autologous Peripheral Blood Stem Cell Transplant (APBSCT) Nursing

(UCD Code NMHS33170)

About

This is an 18 week programme which has been designed to provide the participant with the core nursing skills required to safely, professionally and holistically care for patients receiving APBSCT. On course completion, the participant will be able to demonstrate her/his role in relation to patient-centeredness, patient safety, professional accountability and the need for accurate communication with all members of the multidisciplinary team, patients and their families.

The programme covers theory and practice of the nursing care of patients receiving APBSCT. It combines self-directed learning units (Via Moodle), clinical skills workshops and supervised clinical practice. Theoretical and clinical assessment is undertaken during the programme.

Who is it aimed towards?

All registered nurses caring for patients receiving APBSCT.

Who is eligible?

Registered General Nurses (RGNs). Participants must work within the specialist cancer clinical area for the duration of the course in order to obtain the required competency.

How is it delivered?

- ♦ Learning units
- ♦ Workshops
- ♦ Clinical learning
- ♦ Clinical education support

Can external applicants apply?

Only SVUH staff can apply.

Cost:

SVUH staff members do not incur any fees

Number of places available:

6-10 places

Frequency:

For dates contact the Nurse Education Centre

Closing Date:

Variable

Duration:

18 weeks

UCD accredited at
Level 8 (NFQ)
10 ECTs

For more details contact:

Co-ordinator: Sarah Keane, RNT, skeane@svhg.ie

Graduate Diploma in Cancer Nursing, Colorectal

Run in association with our education partner UCD

About

This programme is run in collaboration with our education partner, UCD. The aim of this module is to advance the Registered General Nurse's repertoire of knowledge and skills in the care of patients with colorectal conditions and lower gastrointestinal (GI) disease/disorders. Disease and treatment-related complications pertaining to patients with breast conditions are also addressed.

Who is eligible?

All applicants must:

Be on the live register maintained by the NMBI as a Registered General Nurse

Hold a primary degree in Nursing (or equivalent in related discipline)/APEL consideration if no degree

Applicants must have at least one year's experience in nursing in their specialist area at time of attendance

Applicants must work a minimum of 75 hours per month in a cancer unit or related cancer setting (caring for patients with colorectal cancer) prior to commencing, and for the duration of the programme.

How is it delivered?

Six modules delivered using blended-learning format.

Can external applicants apply?

This course is open to anyone working in an oncology department nationally. Applications via UCD Central Applications: <http://www.ucd.ie/registry/admissions/apply.html>

For more information please see:

<http://www.nmhs.ucd.ie/study-with-us/graduate-programmes/courses/graduate-diploma-cancer-nursing-adult-breast-children>



Cost:

See UCD fees for further information

Number of places available:

Variable

Frequency:

September every year

Closing Date:

UCD: April each year

SVUH: February/ March each year for fee sponsorship purposes

Duration:

One academic year

UCD accredited at
Level 9 (NFQ)
60 ECTS

For more details contact:

Co-ordinator UCD:

Dr Patricia Fox

Co-ordinator SVUH: TBC

Orpha Walsh, Registered Nurse
Tutor (01) 221 4548; o.walsh@st-vincent.ie

Continuous Professional Development Nursing the Person in a Medical Environment

(UCD Code NMHS33170)

About

The Nursing the Person in a Medical Environment is a four month clinically based course which aims to provide the participant with the knowledge, skills and attitude to care for the medical patient both safely, effectively and holistically. The medical patient often has complex care needs and requires skilled and competent nurses to meet these care needs. On-going competence to practice can only be achieved by a commitment to lifelong learning by all nurses.

Who is it aimed towards:

This is aimed at registered general nurses currently working in one of the general medical ward areas who wishes to enhance their nursing practice through engagement with evidence based information/clinical skills workshops

Who is eligible?

Registered general nurses on the live register with NMBI. Nurses who are currently working in one of designated medical ward areas. Approval must be sought from ADON.

How is it delivered?

This course is delivered in a blended learning format incorporating online learning units hosted on both My View and HSEland, Clinical skills workshops incorporating simulation and finally guidance in clinical practice. Simulation was chosen as teaching/assessment strategy for this course as it provides a safe environment to assess clinical skills in a staged progression of increasing difficulty, appropriate for the level of the learner.

Can external applicants apply?

Currently only SVUH staff can apply

Cost:

SVUH staff members do not incur any fees

Number of places available:

6-10 places

Frequency:

As determined by clinical need

Duration:

20 weeks

UCD accredited at
Level 8 (NFQ)
10 ECTS

For more details contact:

Co-ordinator: TBC

Continuous Professional Development in Care of the Older Person (UCD Code NMHS32910)

About

The Care of the Older Person (COOP) CPD Course is a four month clinically based course which aims to enhance the registered nurses knowledge, skills and competencies in the delivery of care for the older person. The course participants from the designated COOP ward areas spend from 2-3 days during this course rotated into Carew House and shadowing COOP clinical experts. This allows them to achieve focused learning opportunities.

Who is it aimed towards:

This is aimed at registered general nurses currently working in one of the care of the older person areas who wishes to progress in this area of nursing.

Who is eligible?

Registered general nurses on the live register with NMBI Nurses currently working in one of the designated care of the older person areas Our Lady's Ward, St. Agnes Ward Caritas and Carew House. Other medical ward areas may be considered with ADoN approval.

How is it delivered?

The course is delivered in a blending learning format incorporating online Learning Units hosted on My View and HSEland, clinical skills workshops and guidance in clinical practice.

Can external applicants apply?

Currently only SVUH staff can apply

Cost:

SVUH staff members do not incur any fees

Number of places available:

6-10 places

Frequency:

For dates please contact the nurse education Centre

Closing Date:

Variable

Duration:

20 weeks

UCD accredited at
Level 8 (NFQ)
10 ECTS

For more details contact:

Co-ordinator: TBC

Graduate Diploma in Gerontology Nursing

Run in association with our education partner UCD

About

This programme is run in collaboration with our education partner, UCD, Our Lady's Hospice and the Misericordiae University Hospital. This post-graduate clinical training programme will involve instruction in the theory and practice of Gerontological Nursing, with a focus of developing nursing knowledge and skills for comprehensive assessment, planning nursing-specific interventions and coordinating care, services and leadership in the field of gerontological nursing practice.

Who is eligible?

All applicants must:

- ◆ Hold a minimum of a BSc honours degree or equivalent in a related discipline. Applicants not holding an honours bachelor's degree may apply for Recognition of Prior Learning.
- ◆ Be currently registered in one of the following divisions of the Register of Nurses maintained by NMBI: General Nursing; Psychiatric Nursing; Intellectual Disability Nursing
- ◆ Have a minimum of twelve months' post-registration experience
- ◆ Be currently employed in an older persons' care setting and provide written evidence that they will be supported in completing the minimum required hours of practice, including the clinical practicum
- ◆ Applicants not currently employed in an older persons' care setting may apply; however, they will be required to be employed in an older persons' care setting upon commencing the programme.
- ◆ Applicants must be employed for a minimum of 19.5 hours per week or 0.5 FTE.

How is it delivered?

Six modules delivered using blended-learning format.

Can external applicants apply?

This course is open to anyone working in an older person's care setting nationally. Applications via UCD Central Applications:

<http://www.ucd.ie/registry/admissions/apply.html>



Cost:

See UCD fees for further information

Number of places available:

Variable

Frequency:

September every year

Closing Date:

UCD: April each year

SVUH: February/ March each year for fee sponsorship purposes

Duration:

One academic year

**UCD accredited at
Level 9 (NFQ)
60 ECTS**

For more details contact:

Co-ordinator UCD:

Dr Amanda Drury,
0877765610

Co-ordinator SVUH: TBC

Continuous Professional Development in Dermatology Surgical Skills Nursing (UCD Code NMHS33860)

About

This is a 6 month programme which serves as an introduction to Dermatology nursing. The CPD in Dermatology Nursing is designed to provide the participant with the core nursing skills required to safely, professionally and holistically care for patients in the Dermatology Department. On course completion, the participant will be able to identify and monitor skin conditions, carry out minor skin surgery, provide specialist nursing care, psychological support, maintain safe and effective practice within the skin cancer service.

Who is it aimed towards?

Registered Nurses who are already working within the Dermatology Department (Charles Centre) in SVUH, who wish to advance their theoretical knowledge and clinical skills in nursing care.

Who is eligible?

Registered general nurses.

How is it delivered?

Blended learning,

- ◆ Clinical supervision – Consultant led
- ◆ Learning units
- ◆ Workshops
- ◆ Clinical learning
- ◆ Clinical education support

UCD accredited at
Level 8 (NFQ)
10 ECTs

Can external applicants apply?

Only SVUH staff can apply.



Cost:

SVUH staff members do not incur any fees

Number of places available:

2 places

Frequency:

Variable pending on service requirement

Closing Date:

2 weeks before commencement of course

Duration:

26 weeks

For more details contact:

Co-ordinator: Sarah Keane, RNT, skeane@svhg.ie

Continuous Professional Development in Peri-Operative Nursing (UCD Code NMHS32880)

About

This is a 6 month programme which serves as an introduction to Peri-Operative nursing. The CPD in Peri-Operative Nursing is designed to provide the participant with the core nursing skills required to safely, professionally and holistically care for patients in Anaesthetics, PACU and Scrub. On course completion, the participant will be able to demonstrate her/his role in relation to patient-centeredness, patient safety, professional accountability and the need for accurate communication with all members of the multidisciplinary team, patients and their families.

Who is it aimed towards?

Registered Nurses who are new to the theatre nursing environment, or who wish to advance their theoretical knowledge and clinical skills in nursing care.

Who is eligible?

Registered general nurses. Participants must rotate through PACU, anaesthetics and Scrub during this course.

How is it delivered?

- ♦ Learning units
- ♦ Workshops
- ♦ Clinical learning
- ♦ Clinical education support

Can external applicants apply?

Only SVUH staff can apply.



Cost:

SVUH staff members do not incur any fees

Number of places available:

6-10 places

Frequency:

Once a year—January

Closing Date:

Variable

Duration:

26 weeks

UCD accredited at
Level 8 (NFQ)
10 ECTs

For more details contact:

Co-ordinator: Sarah Keane, RNT, ; skeane@svhg.ie

Continuous Professional Development in Radiology Nursing (UCD Code NMHS33880)

About

This is a 6 month programme which serves as an introduction to Radiology nursing. The CPD in Radiology Nursing is designed to provide the participant with the core nursing skills required to safely, professionally and holistically care for patients in Radiology. On course completion, the participant will be able to demonstrate her/his role in relation to patient-centeredness, patient safety, professional accountability and the need for accurate communication with all members of the multidisciplinary team, patients and their families.

Who is it aimed towards?

Registered Nurses who are new to the Radiology Department, or who wish to advance their theoretical knowledge and clinical skills in radiology nursing care.

Who is eligible?

Registered general nurses.

How is it delivered?

- ◆ Learning units
- ◆ Workshops
- ◆ Clinical learning
- ◆ Clinical education support

Can external applicants apply?

Only SVUH staff can apply.



Cost:

SVUH staff members do not incur any fees

Number of places available:

4-6 places

Frequency:

For dates contact the Nurse Education Centre

Closing Date:

Variable

Duration:

26 weeks

UCD accredited at
Level 8 (NFQ)
10 ECTS

For more details contact:

Co-ordinator: Sarah Keane, RNT, ; skeane@svhg.ie

Graduate Diploma in Nursing - Radiology

Run in association with our education partner UCD

About

The Graduate Diploma Nursing (Radiology) consists of a total of 6 modules of study that are designed to enhance your knowledge with respect to holistic assessment and managements of clients in the radiology department. The programme will provide you with an opportunity to develop enhance and maintain the specialist skills that are required to care for persons in the radiology setting.

Who is eligible?

- ◆ Applicants must have at least six month's experience in Radiology Nursing at time of attendance.
- ◆ Applicants must be employed in a Radiology Dept. prior to commencing the course and for duration of the course.
- ◆ Applicants must hold a primary degree in Nursing (or equivalent in related discipline)/APEL consideration if no degree.
- ◆ Applicants must be entered onto the appropriate division of the Nurses Register maintained by Nursing and Midwifery Board of Ireland (be registered as an RGN).
- ◆ Other criteria to be used in the assessment of the application include number of years of experience, and evidence of ongoing professional development.

How is it delivered?

Six modules delivered using blended-learning format

Can external applicants apply?

Apply through UCD Central Applications.

<http://www.ucd.ie/registry/admissions/apply.html>



Cost:

See UCD fees for further information

Number of places available:

Ten places available

Frequency:

September every year

Closing Date:

UCD: April each year

SVUH: February/March each year for fee sponsorship purposes

Duration:

One academic year

UCD accredited at
Level 9 (NFQ)
60 ECTS

For more details contact:

Co-ordinator UCD:
Mary McGrath

Co-ordinator SVUH: Sarah Keane,
RNT, ; skeane@svhg.ie

For more information please see:
<http://www.nmhs.ucd.ie/study-with-us/graduate-programmes/acute-and-critical-care-nursing>

Continuous Professional Development in Surgical Nursing: Hepato-Pancreatic-Biliary (HPB) and Gastrointestinal (GI) Strand (UCD Code NMHS33950)

About

This course is accredited by UCD. It runs over a period of 16 weeks. It is a blended-learning course, consisting of a number of online learning units with workshops, simulations and consolidation of learning in clinical practice. Participants are clinically assessed two times during the course using an Assessment of Clinical Competencies framework, a poster presentation and 500 word abstract.

Who is eligible?

Registered General Nurses who are permanent members of staff working on Acute Surgical Unit, St. Luke's 1 ward, St. Luke's 2 ward, St. Helens ward, and St. Charles ward in St Vincent's University Hospital.

How is it delivered?

There is an emphasis on self-directed learning, with facilitation, guidance and support by the Clinical Facilitator, Nurse Tutor, Clinical Nurse Managers/Specialists, and Senior Clinical RN's as you navigate through the various learning experiences.

- ◆ Learning units
- ◆ Workshops
- ◆ Clinical learning
- ◆ Clinical education support

Can external applicants apply?

Only SVUH staff can apply.

Cost:

SVUH staff members do not incur any fees

Number of places available:

6-8 places

Frequency:

For dates contact the Nurse Education Centre

Closing Date:

Variable

Duration:

16 weeks

UCD accredited at
Level 8 (NFQ)
10 ECTS

For more details contact:

Co-ordinator: Anto Jayasundar, NT, (01)221 4543, ajjayasundar@svhg.ie

Nurse Education and Practice Development Learning units.

Learning units may be standalone or grouped together to form a course. Some learning units are available to all nursing grades without enrolment required. For all other learning units enrolment is required, for access staff are required to be in an eligible area. Access is only granted by the Nurse Education & Practice Development Department.

Staff access the learning portal through the staff access and log-on with their MY-View details. External learners partaking of the learning units will receive an email with instructions and a link to the learn-on-line site.

| No. | Learning Unit Title | Code |
|-----|--|----------------|
| 1 | How to design a learning unit | LU-Nurse-00100 |
| 2 | Aseptic Non Touch Technique ANTT® | LU-Nurse-00101 |
| 3 | Intravenous Medication Administration: Policy and Preparation of Intravenous Medications | LU-Nurse-00102 |
| 4 | Central Venous Access Devices (CVAD) | LU-Nurse-00103 |
| 5 | Intravenous Medication Calculations | LU-Nurse-00104 |
| 6 | Safe Medication Administration for Nurses | LU-Nurse-00105 |
| 7 | Procedural Sedation Preparation- Nursing | LU-Nurse-00106 |
| 8 | Fundamentals of Delirium | LU-Nurse-00107 |
| 9 | Drug Safety Online Course | LU-Nurse-00108 |
| 10 | Safe use of Controlled Drugs (MDA's) in St Vincent's University Hospital | LU-Nurse-00109 |

| No. | Learning Unit Title | Code |
|-----|---|----------------|
| 11 | Acute Pain Assessment | LU-Nurse-00110 |
| 12 | Nursing Management of Gastrostomy & jejunostomy Tubes | LU-Nurse-00111 |
| 13 | Respiratory Assessment for Critical Care | LU-Nurse-00112 |
| 14 | Cardiac Assessment for Critical Care | LU-Nurse-00113 |
| 15 | Temporary Pacing | LU-Nurse-00114 |
| 16 | Nursing Patient with an Arterial Line | LU-Nurse-00115 |
| 17 | Angiogram & Percutaneous Coronary Intervention (PCI) | LU-Nurse-00116 |
| 18 | Acute Coronary Syndrome | LU-Nurse-00117 |
| 19 | 12 Lead ECG Interpretation | LU-Nurse-00118 |
| 20 | Health Assessment Course | LU-Nurse-00119 |
| 21 | Airway Management and Oxygen Therapy | LU-Nurse-00120 |
| 22 | Care of Central Venous Catheter and Central Venous Pressure | LU-Nurse-00121 |
| 23 | Arterial Blood Gas Interpretation | LU-Nurse-00122 |
| 24 | Assessment of Delirium and Sedation in the ICU | LU-Nurse-00123 |
| 25 | Pain Assessment and Management in ICU | LU-Nurse-00124 |
| 26 | Care of the Critically Ill Patient in the Intensive Care Unit | LU-Nurse-00125 |
| 27 | Introduction to Mechanical Ventilation | LU-Nurse-00126 |
| 28 | Non-Invasive Ventilation in Critical Care | LU-Nurse-00127 |
| 29 | Nursing Induction (located in Induction Hub) | LU-Nurse-00128 |
| 30 | Respiratory Failure | LU-Nurse-00129 |
| 31 | Pre-operative care of the pancreas transplant patient | LU-Nurse-00130 |
| 32 | Post-operative nursing management of the SPK patient | LU-Nurse-00131 |
| 33 | Administration of immunosuppression and self-administration of | LU-Nurse-00132 |
| 34 | Patient Education and Health Promotion for Discharge- (SPK) | LU-Nurse-00133 |
| 35 | Re-admission of the patient post SPK | LU-Nurse-00134 |
| 36 | Principles of Intrapleural Chest Drain Care | LU-Nurse-00135 |
| 37 | Inotropic Support | LU-Nurse-00136 |
| 38 | Principles of Tracheostomy Care | LU-Nurse-00137 |
| 39 | Modes of Ventilation | LU-Nurse-00138 |
| 40 | Peritoneal Dialysis Skills Workshop | LU-Nurse-00139 |
| 41 | Weaning from Mechanical Ventilation including End of Life Care in ICU | LU-Nurse-00140 |
| 42 | The administration of Ganciclovir by nurses in general ward areas | LU-Nurse-00141 |
| 43 | Fluid and Electrolyte Management | LU-Nurse-00142 |
| 44 | Continuous Renal Replacement Therapy in ICU | LU-Nurse-00143 |
| 45 | Care of the High Dependency Patient outside ICU | LU-Nurse-00144 |
| 46 | Introduction to Shock | LU-Nurse-00145 |
| 47 | Care of the Patient with Acute Liver Failure in ICU | LU-Nurse-00146 |
| 48 | Care of the Patient Post Liver Transplantation in ICU | LU-Nurse-00147 |
| 49 | Care of the Patient with Traumatic Brain Injury in ICU | LU-Nurse-00148 |
| 50 | Seizures and Epilepsy | LU-Nurse-00150 |
| 51 | Overdose and Poisoning | LU-Nurse-00151 |
| 52 | Acute Kidney Injury | LU-Nurse-00152 |
| 53 | Careful Nursing-Overview | LU-Nurse-00153 |
| 54 | Careful Nursing-Philosophy | LU-Nurse-00154 |
| 55 | Careful Nursing-Therapeutic Milieu | LU-Nurse-00155 |

| No. | Learning Unit Title | Code |
|-----|---|----------------|
| 56 | Careful Nursing-Practice, Competence and Excellence | LU-Nurse-00156 |
| 57 | Careful Nursing-NANDA-I, NIC and NOC | LU-Nurse-00157 |
| 58 | Infection prevention and Control in the OT | LU-Nurse-00158 |
| 59 | Introduction to Anaesthesia Nursing | LU-Nurse-00159 |
| 60 | Patient Assessment in Theatre reception | LU-Nurse-00160 |
| 61 | Nursing Care of the Patient in PACU | LU-Nurse-00161 |
| 62 | Discharge from PACU | LU-Nurse-00162 |
| 63 | Fasting | LU-Nurse-00163 |
| 64 | Informed Consent | LU-Nurse-00164 |
| 65 | Basic Airway Management | LU-Nurse-00165 |
| 66 | General Anaesthesia | LU-Nurse-00166 |
| 67 | Neuraxial Anaesthesia | LU-Nurse-00167 |
| 68 | Peripheral Nerve Blocks | LU-Nurse-00168 |
| 69 | Quality, Safety and risk Management in theatre | LU-Nurse-00169 |
| 70 | Pain Assessment in the Operating Department | LU-Nurse-00170 |
| 71 | Pain Management in the Operating Department | LU-Nurse-00171 |
| 72 | Thermoregulation | LU-Nurse-00172 |
| 73 | Patient Positioning | LU-Nurse-00173 |
| 74 | Massive Blood transfusion | LU-Nurse-00174 |
| 75 | Latex Allergy | LU-Nurse-00175 |
| 76 | Peri-Operative Anaphylaxis | LU-Nurse-00176 |
| 77 | Malignant Hyperthermia | LU-Nurse-00177 |
| 78 | Advanced Airway Management | LU-Nurse-00178 |
| 79 | Developing a Professional and Therapeutic Nurse-Patient Relationship | LU-Nurse-00179 |
| 80 | Care of the Patient with Bleeding Varices | LU-Nurse-00180 |
| 81 | Care of the Patient with Hepatic Encephalopathy | LU-Nurse-00181 |
| 82 | Chronic Kidney Disease, Patrick's Journey | LU-Nurse-00182 |
| 83 | Administration of Parental Nutrition | LU-Nurse-00183 |
| 84 | Nursing Handover | LU-Nurse-00184 |
| 85 | Cancer Cell Biology | LU-Nurse-00185 |
| 86 | Diagnosis and Staging of Cancer and the Nurse's role in Supporting Patients | LU-Nurse-00186 |
| 87 | Principles of Cancer Therapies and Multimodality Treatment | LU-Nurse-00187 |
| 88 | Chemotherapy agents, routes of administration and modes of action | LU-Nurse-00188 |
| 89 | Common Acute Side Effects of Cancer Therapies | LU-Nurse-00189 |
| 90 | Oral Mucositis Secondary to Chemotherapy/ Radiotherapy | LU-Nurse-00190 |
| 91 | Neutropenic Sepsis | LU-Nurse-00191 |
| 92 | Tumour Lysis Syndrome | LU-Nurse-00192 |
| 93 | Spinal Cord Compression | LU-Nurse-00193 |
| 94 | Care and Management of Totally Implanted Vascular Access Devices | LU-Nurse-00194 |
| 95 | Care and Management of Hickman Lines | LU-Nurse-00195 |
| 96 | Nursing Care of the Patient Undergoing Stem Cell Harvest | LU-Nurse-00196 |
| 97 | Nursing Care of the Patient Receiving Stem Cell Transplant | LU-Nurse-00197 |
| 98 | Patient Assessment- Cancer Care | LU-Nurse-00198 |
| 99 | Patient Education-Cancer Care | LU-Nurse-00199 |

| No. | Learning Unit Title | Code |
|-----|---|----------------|
| 100 | Safe Handling of Cytotoxics | LU-Nurse-00200 |
| 101 | Introduction to Palliative Care | LU-Nurse-00201 |
| 102 | End of Life Care | LU-Nurse-00202 |
| 103 | Palliative Care, Symptom Management | LU-Nurse-00203 |
| 104 | Palliative Medication and Set up of Syringe Driver | LU-Nurse-00204 |
| 105 | Valvular Heart Disease | LU-Nurse-00205 |
| 106 | Overview of Liver Disease | LU-Nurse-00210 |
| 107 | Care of a Patient with Liver-Related Ascites and Its Complications | LU-Nurse-00211 |
| 108 | Understanding Cognition | LU-Nurse-00212 |
| 109 | Falls and Harmful Falls-Prevention & Management | LU-Nurse-00213 |
| 110 | Initial Neurological Assessment | LU-Nurse-00214 |
| 111 | Care of Patient with Acute Liver Failure on St. Brigid's ward | LU-Nurse-00215 |
| 112 | Practical Aspects of Tracheostomy Care | LU-Nurse-00216 |
| 113 | Medication and the Older Adult incorporating Polypharmacy | LU-Nurse-00217 |
| 114 | Fundamentals of Frailty | LU-Nurse-00218 |
| 115 | Hypertension | LU-Nurse-00219 |
| 116 | Liver Transplantation in the Operating Theatre | LU-Nurse-00220 |
| 117 | Care of the Patient Pre- and Post-Liver Transplant on St. Brigid's Ward | LU-Nurse-00221 |
| 118 | Atrial Arrhythmias | LU-Nurse-00222 |
| 119 | Ventricular Arrhythmias | LU-Nurse-00223 |
| 120 | What is Diabetes? | LU-Nurse-00224 |
| 121 | Insulin Therapy | LU-Nurse-00225 |
| 122 | Oral Hypoglycaemic Agents | LU-Nurse-00226 |
| 123 | Hypoglycaemia | LU-Nurse-00227 |
| 124 | Hyperglycaemia | LU-Nurse-00228 |
| 125 | ECG Rhythm Interpretation & Applied Physiology | LU-Nurse-00229 |
| 126 | Atrio Ventricular Heart Blocks | LU-Nurse-00230 |
| 127 | Inflammatory Heart Disease | LU-Nurse-00231 |
| 128 | Intentional Rounding | LU-Nurse-00232 |
| 129 | Fundamentals of Constipation and the Older Adult | LU-Nurse-00233 |
| 130 | Urinary Elimination and the Older Adult | LU-Nurse-00234 |
| 131 | Male Catheterisation -Part A | LU-Nurse-00235 |
| 132 | Male Catheterisation -Part B | LU-Nurse-00236 |
| 133 | Discharge Planning and Older Persons | LU-Nurse-00237 |
| 134 | Ethical Issues and the Older Person with/without Capacity | LU-Nurse-00238 |
| 135 | Care of the Patient with a Suprapubic Catheter | LU-Nurse-00239 |
| 136 | Osteoporosis and the Older Adult | LU-Nurse-00240 |
| 137 | Abdominal Assessment | LU-Nurse-00241 |

| No. | Learning Unit Title | Code |
|-----|---|----------------|
| 138 | Chemical Eye Injury | LU-Nurse-00242 |
| 139 | Non-Invasive Ventilation Part 3: Nursing Care | LU-Nurse-00243 |
| 140 | Acute Pain Management | LU-Nurse-00244 |
| 141 | VTE | LU-Nurse-00245 |
| 142 | Non-Invasive Ventilation Part 1: Principles of Respiratory Failure and Its Management | LU-Nurse-00246 |
| 143 | Non-Invasive Ventilation Part 2: Clinical Application | LU-Nurse-00247 |
| 144 | Nursing Management of a patient requiring Thrombectomy & Thrombolysis | LU-Nurse-00248 |
| 145 | Skin Assessment, Risk Assessments and Prevention Planning | LU-Nurse-00249 |
| 146 | Wound Assessment & Nursing Management | LU-Nurse-00250 |
| 147 | Pressure Area Care and Nursing Management | LU-Nurse-00251 |
| 148 | Chemotherapy induced Nausea and Vomiting | LU-Nurse-00252 |
| 149 | Potential Complication Post APSCT - A) Cardiac dysfunction | LU-Nurse-00253 |
| 150 | Introduction to Psycho Oncology | LU-Nurse-00254 |
| 150 | Acute Kidney Injury secondary to APSCT | LU-Nurse-00255 |
| 151 | Cytokine release syndrome- potential complication Post APSCT | LU-Nurse-00256 |
| 152 | Macrophage activation syndrome- potential complication Post APSCT | LU-Nurse-00257 |
| 153 | Sinusoidal Obstruction Syndrome Secondary to APSCT | LU-Nurse-00258 |
| 154 | Disseminated intravascular coagulation potential Complication Post APSCT | LU-Nurse-00259 |
| 155 | Syncope | LU-Nurse-00260 |
| 156 | Acute Management of Respiratory Conditions | LU-Nurse-00261 |
| 157 | Ongoing Management of Respiratory Conditions | LU-Nurse-00262 |
| 158 | CPD End of Course Evaluation | LU-Nurse-00263 |
| 159 | Overview of Heart Failure | LU-Nurse-00264 |
| 160 | Redeployment to Critical Care Education | LU-Nurse-00265 |
| 161 | Oral Care | LU-Nurse-00266 |
| 162 | Educational requirements for Peer Vaccinators during the COVID-19 Pandemic | LU-Nurse 00267 |
| 163 | Nursing Management of Patients in Respiratory Distress and Desaturating Leading to Non-Invasive Ventilation (NIV) | LU-Nurse-00268 |
| 164 | Suturing and Wound closure | LU-Nurse-00269 |
| 165 | Surgical counts | LU-Nurse-00270 |
| 166 | Surgical scrub, Gloving and Gowning and Draping | LU-Nurse-00271 |
| 167 | Surgical instruments | LU-Nurse-00272 |
| 168 | Haemostasis and estimation of blood loss | LU-Nurse-00273 |

| No. | Learning Unit Title | Code |
|-----|--|----------------|
| 169 | Tourniquet | LU-Nurse-00274 |
| 170 | Electrosurgical devices | LU-Nurse-00275 |
| 171 | Stapling and Laparoscopic surgery | LU-Nurse-00276 |
| 172 | Specimen management in the Operating Theatre | LU-Nurse-00277 |
| 173 | perioperative | LU-Nurse-00278 |
| 174 | Benign skin lesions | LU-Nurse-00279 |
| 175 | Common pigmented lesions | LU-Nurse-00280 |
| 176 | Basal cell carcinoma | LU-Nurse-00281 |
| 177 | Squamous cell carcinoma | LU-Nurse-00282 |
| 178 | Melanoma | LU-Nurse-00283 |
| 179 | Cardiovascular monitoring for Liver Transplantation | LU-Nurse-00284 |
| 180 | Enhanced Care | LU-Nurse-00285 |
| 181 | Acute Rhythm Recognition | LU-Nurse-00286 |
| 182 | Small Bowel Obstruction | LU-Nurse-00287 |
| 183 | Hepatico-pancreatico-Biliary (HPB) | LU-Nurse-00288 |
| 184 | Pancreatitis | LU-Nurse-00289 |
| 185 | Optimisation of patients pre and post-operative Medication Management. | LU-Nurse-00290 |
| 186 | Musculo-Skeletal Assessment | LU-Nurse-00291 |
| 187 | Plaster Casting | LU-Nurse-00292 |
| 188 | Nursing Care and Management of Nasogastric Tubes (NG) | LU-Nurse-00293 |

This list is current as of December 2023. This list will be updated with each update of the prospectus as new learning units are in constant development.

