



**ST. VINCENT'S  
UNIVERSITY HOSPITAL**  
Elm Park



---

Nurse Education & Practice Development

# Induction and Mandatory Training



## Prospectus 2026

Information correct as of end December 2025



Nurse Education Centre  
St. Vincent's University Hospital  
Elm Park  
Dublin 4



## About St Vincent's University Hospital

St Vincent's Hospital was founded by Mother Mary Aikenhead foundress of the Religious Sisters of Charity and established at St Stephen's Green in 1834. The hospital transferred to its present site in Elm Park in 1970 and subsequently changed its title to St Vincent's University Hospital in 1999.

St Vincent's University Hospital  
Elm Park  
Dublin 4  
Tel; (01) 221 4000  
Email:  
nurseeducationcentre@svuh.ie

St. Michael's Hospital, Dun Laoghaire was founded in 1876 and governed by the Sisters of Mercy. Transfer of ownership of St. Michael's to the Religious Sisters of Charity took place in March 2001 in exchange for the Children's Hospital, Temple Street.

St. Vincent's University Hospital is a major academic teaching hospital. We provide a front line emergency service and national/regional medical care at inpatient and outpatient level. St. Vincent's University Hospital provides in excess of forty medical specialities. The hospital has approx. 600 in-patient beds, incorporating 7-day, 5-day and day care options. St Vincent's University Hospital is a health promoting hospital. Education and research are major components of the philosophy of St. Vincent's University Hospital.

Facilities are provided for the academic and clinical training of medical students, nurses, laboratory technicians, research scientists, physiotherapists, occupational therapists, radiographers, medical social workers, dieticians and speech therapists. St Vincent's University Hospital is a NO SMOKING hospital. Visitors are prohibited from smoking on the premises.

## Our Mission

St Vincent's Healthcare Group is a non-profit group that is trusted by patients to provide best care through an expert team with the right processes and resources, and an approach that ensures each patient has access to the right treatment.

### 1. Best patient care

We will provide the highest quality patient care, always recognising our values of human dignity, compassion, justice, quality and advocacy. We will treat patients with warmth, empathy and understanding and respect their concerns, feelings and expectations.

### 2. Best team and resources

We will strive to recruit and retain excellent people at all levels, and to ensure they work with modern and efficient facilities and technologies to deliver best outcomes for all our patients. We will deliver comprehensive programmes of research and education involving leading medical colleges.

### 3. Best processes

We will maintain a healthy and safe environment and provide a healthcare service that is efficient and cost-effective, so that we deliver the best possible return for monies invested. Our hospitals will be well managed and accredited to the best international standards.

### 4. Best approach

We support an integrated model of healthcare for Ireland and we recognise our responsibility to work with others to make that a reality and to ensure all patients have access to the right medical treatment regardless of race, religion or ability to pay

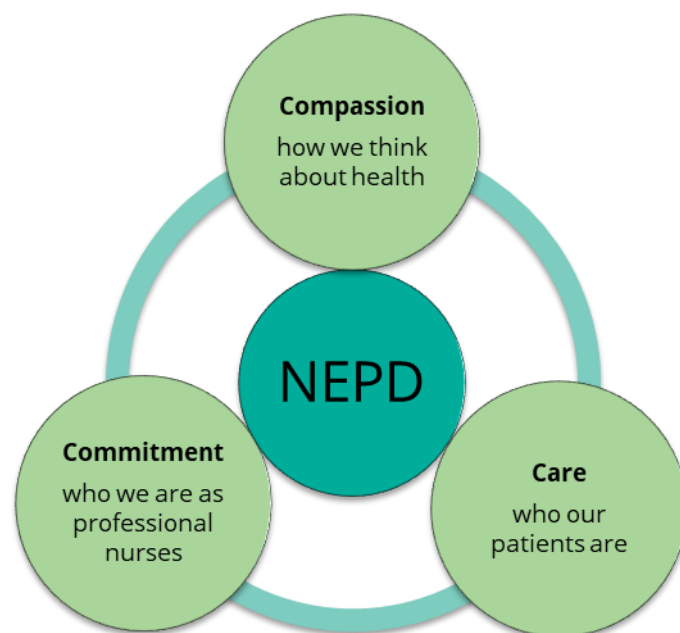


Ann Flynn  
Director of Nursing

## Nurse Education and Practice Development (NEPD) Philosophy

Underpinning our philosophy are the Nursing and Midwifery values of Compassion, Care and Commitment, whose associated behaviours are the essence of Nursing and Midwifery practice and form the basis for professional decision making and actions.

The Nurse Education and Practice Development Department philosophy is based on the three philosophical principles of Careful Nursing ©:



### 1. *Understanding who we are as professional nurses*

Patient safety and the delivery of high quality care by competent nurses is always the priority. Nursing education promotes lifelong learning and continual personal and professional development to enable nurses to be effective decision-makers in practice. We support, guide and encourage all nurses as they gain knowledge, skills and attitudes to be competent clinical practitioners using Biggs (1996) model of constructive alignment in curriculum design to develop all nursing education in this Centre.

### 2. *Understanding who our patients are and the nature of our relationship with them*

We have a strong team spirit and together we strive to create partnership with our patients, colleagues in the clinical areas and with all other disciplines to encourage a person-centred approach to care. We will continue to develop nursing practice with an enthusiastic and positive attitude and ensure the specific clinical education needs are analysed and addressed as they relate to each patient in our care.

### 3. *Understanding how we think about health*

Nurses as learners are self-motivated and engage proactively in their own learning. Learners are encouraged to build on their own body of knowledge based on individual experience and to apply this knowledge directly to the health care environment. We aspire to continually develop and maintain best practice in nursing and endeavour to promote continuous quality improvement in patient care.



## Nursing Practice Development

The Nursing Practice Development Department focuses on developing and supporting staff with evidence based practice standards across the hospital.

As an academic teaching hospital, we provide excellent clinical placements for undergraduate nursing students for the General Programme, the combined Children's' & General and Programmes and the Mental Health Nursing Programme. We have Clinical Placement Coordinators to support the students and help clinical staff provide a positive learning environment and culture of continuous education.

The Resuscitation training officers are also part of the nurse practice development team providing course participants with the knowledge and skills required to recognise when a person is in cardiac arrest, to activate the cardiac arrest team and to provide high quality CPR (cardiopulmonary resuscitation) and to use an AED (automated external defibrillator).

For qualified staff, the Nursing Practice Development team provide short skills based courses and ward based learning sessions and support. If you have a clinical query, we are at the end of the telephone and will do our best to point you in the right direction and address your learning needs. We have a wealth of up-to-date clinical policies, guidelines and procedures, which are evidence based and available on all computers in the hospital. New staff to the hospital are provided with a group orientation on their first day, followed by a variety of practice induction programmes, and we work with you to ensure it suits your individual needs.

There are opportunities for clinical staff to take on fixed term project work and develop a whole new range of skills.



Laura O'Toole  
CNM2



Siji Thomas  
CNM2



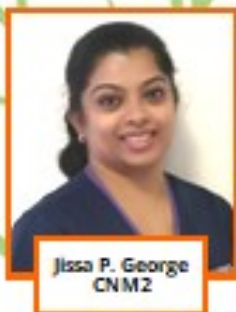
Aissah  
Penacerrada  
CNM2



Grace Gorge  
CNM2 Resus



Riny Simon  
CNM2



Jissa P. George  
CNM2



Lorraine Larkin  
CNM2



Sally Staunton  
CNM3  
Deteriorating  
Patient



Deirdre  
O'Riordan  
Mandatory  
Training Admin



Colette Farrell  
CNM3



Smita Mathew  
ADoN



Lucy O'Connell  
CNM2 Resus

## Nurse Practice Development Team





**Clinical Placement Co-ordinators  
&  
Student Allocations Liaison Officer Team**

The following are Induction and Mandatory training required for Nursing, along with the following education provided by SVUH there are also mandatory HSE learning to undertake. A list of the Education and Training required, along with the renewal timeframe is on the last 2 pages of this document, allowing for printing and maintaining your own records of completion. This list is also available on Q-Pulse STAFF-ORG-97 SVUH Staff quick guide Mandatory Training Nursing & HCA and in the Nursing Induction Learning unit. This prospectus is for SVUH staff only.

Page:

9. Nurse Induction
9. New Graduate Induction
10. Practice Support Programme
11. Internationally Educated Nurse Adaptation and Assessment Programme
12. HCA Induction
13. Hospital Orientation for BSc Nursing Programme SVHG (Stage 1 nursing students)
14. Hospital Orientation for BSc Nursing (Stage 4 Internship Nursing Students)
15. Resuscitation Training
  16. Heartsaver CPR & AED Course
  17. Basic Life Support (BLS) Healthcare Provider (HCP)
  18. ACLS Experienced Provider
  19. Advanced Cardiac Life Support (ACLS) 2 Day Course, Classroom based
  20. Heartcode Advanced Cardiac Life Support (ACLS) (blended)
21. Careful Nursing Philosophy & Professional Practice Model- Theory & Practice Programme
22. Enhanced Care Programme
23. Clinical Handover
24. Health Assessment
25. Safe Medication Administration Programme for Nurses
26. Intravenous Medication Administration Programme
27. Venepuncture and Cannulation Workshop
28. National Frailty Education Programme. The Fundamentals of Frailty
29. Preceptorship in Practice workshop
- 30.-31. Education and Training required, check list

## Contents

*For start dates,  
please check our  
monthly newsletter or  
Contact the Course  
Co-Ordinator, details  
on the bottom of  
each page*



# Nurse Induction

## About

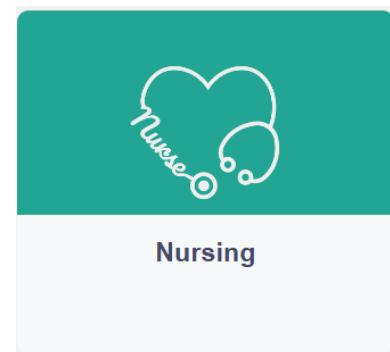
The aim of this induction is to provide registered nurse recruits, new to the hospital, with an introduction to some of the resources, processes, systems and people that will help them integrate into the Hospital. The *Nurse Induction Orientation Handbook* has been designed to further support and enhance this integration process.

## Who is eligible?

Newly recruited registered nurses and 4th year Intern BSc nursing students.

## How is it delivered?

This induction is delivered on-line.



## Nurse Induction

### Number of places

**available:** No maximum

### Frequency:

Monthly

### Closing Date:

One week prior to commencement

### Duration:

4-5 hours to complete.

## New Graduate Induction

### About

The purpose of this induction is to support the newly qualified nurse in the transition from student to registered nurse.

### Who is eligible?

Newly registered and pre-registered nurses.

### How is it delivered?

This induction is delivered on site with follow up in clinical area .

**For more details contact:** [npd@svhg.ie](mailto:npd@svhg.ie) inserting the topic in the subject line.

### For more details contact on Nurse Induction:

**Co-ordinator:** Jody O'Reilly, CNM2, 01 221 4232 [jody.oreilly@svuh.ie](mailto:jody.oreilly@svuh.ie)

**Bookings:** Made by HR directly to Coordinator

# Practice Support Programme

## About

The Practice Support Programme is provided by St. Vincent's University Hospital to Registered Nurses who have been employed and working in non-acute hospital settings and wish to make the transition to the acute setting. The programme takes five weeks to complete (including 1 week orientation/induction).

## Who is it aimed towards?

Registered Staff Nurses employed in non-acute hospital settings (e.g. Nursing Homes), recruited to work within St Vincent's University Hospital Group.

## How is it delivered?

A mixture of classroom based education sessions, simulation, workshops, online learning and clinical placement .

### Number of places available:

Variable

### Frequency:

Two-monthly, on needs basis

### Closing Date:

Not applicable

### Duration:

5 weeks

**For more details contact:** [npd@svhg.ie](mailto:npd@svhg.ie) inserting the topic in the subject line

# Internationally Educated Nurse Adaptation and Assessment Programme

## About

The Adaptation and Assessment programme for Internationally Educated Nurses (IENs) is provided by St. Vincent's University Hospital to Candidate Nurses recruited to work within St Vincent's University Hospital Group.

On completion of the course and once deemed competent in all 6 Domains of Competence (NMBI, 2019), candidate nurses will be recommended for Irish Nursing Registration with NMBI. Candidate Nurses remain supernumerary for the duration of the course. The course takes minimum seven weeks to complete (including 1 week orientation/induction) but this can be extended to twelve weeks.

## Who is it aimed towards?

Internationally Educated Nurses requiring compensation measure for registration.

## Who is eligible?

Candidate nurses recruited to work within St Vincent's University Hospital Group.

## How is it delivered?

A mixture of classroom based education sessions, simulation, workshops, online learning and supervised clinical placements.



### Number of places available:

Variable

### Frequency:

Variable, on needs basis

### Closing Date:

Not applicable

### Duration:

Up to 12 weeks

- One week orientation
- 6 (up to 11) weeks Supervised Placement Practice

**For more details contact:** [npd@svhg.ie](mailto:npd@svhg.ie) inserting the topic in the subject line

# Healthcare Assistant (HCA) Induction

## **About**

A HCA Induction is available to all new Health Care Assistants in the hospital. It is a combination of theory and workshops. The aim of the HCA Induction is to provide the knowledge and skills required to provide safe care to our patients.

## **Who is it aimed towards?**

The induction is provided for all new HCAs in the hospital.

## **Who is eligible?**

Health Care Assistants who are new to the hospital or those who are struggling with different aspects of their job role.

## **How is it delivered?**

In-house in a group of minimum 5 staff or facilitated individually as an abridged version.

### **Number of places available:**

Minimum 5

Maximum 12

### **Frequency:**

On-going as required

### **Closing Date:**

Not applicable

### **Duration:**

One day: 08.00-17.00 (for group)

**For more details contact:** [npd@svhg.ie](mailto:npd@svhg.ie) inserting the topic in the subject line.

# Hospital Orientation for BSc Nursing Programme SVHG (Stage 1 nursing students)

## About

Orientation days are run for the Stage 1 nursing students (General and Integrated Children's and General Programmes) on commencement of their first clinical placement in SVUH. These days include :

- Address from Director of Nursing
- Allocation of lockers
- Photographs and distribution of security badges
- Presentation re clinical placement and relevant hospital policies.
- Standard precautions
- Training in Blood Glucose monitoring
- Hospital tour including orientation to clinical area on which the student will be on placement (Checklist to be completed)

## Who is it aimed towards?

All Stage 1 BSc Nursing students on placement in SVUH

## How is it delivered?

Classroom based delivery of presentations. Hospital tour included on the day to orientate students to SVUH clinical site.

### Number of places available:

Numbers vary year on year

### Frequency:

Two days annually

### Closing Date:

N/A

### Duration:

Seven hours

### For more details contact:

#### Clinical Placement Co-ordinator:

Brenda Lowry, CPC, (01) 221 4024 [blowry@svhg.ie](mailto:blowry@svhg.ie)  
Deirdre Gallagher, CPC, [deirdregallagher@svhg.ie](mailto:deirdregallagher@svhg.ie)  
Deirdre Sheedy, CPC, [deirdresheedy@svhg.ie](mailto:deirdresheedy@svhg.ie)



# Hospital Orientation for BSc Nursing (Stage 4 Internship Nursing Students)

## About

Orientation for our Internship student's runs in January for our General Students and April for our Children's and General Students.

This includes:

- Nurse Induction
- On Boarding for New Staff
- NPD Adon and SALO address
- Careful Nursing Programme
- Blood Bank Visit
- CPC Orientation to Internship and Clinical Area
- Experiences from a New Graduate Nurse
- Infection Prevention and Control
- Skills Workshop (Sepsis Station, Tracheostomy Station, Airvo Station and Cardiac Arrest Management Station)

## Who is it aimed towards?

All Stage 4 Internship BSc Nursing students on placement in SVUH

## How is it delivered?

A mix of both online, E-Learning programmes and classroom based delivery

### Number of places available:

Numbers vary year on year

### Frequency:

Annually

### Closing Date:

N/A

### Duration:

37.5 Hours

### For more details contact:

Clinical Placement Co-ordinator: Emma O'Callaghan  
Phone: 01 2215345 /Bleep 072 email: emmaocallaghan@svhg.ie

## Resuscitation Training



- ⇒ Heartsaver CPR & AED Course
- ⇒ Basic Life Support (BLS) Healthcare Provider (HCP)
- ⇒ Heartcode BLS (blended)
- ⇒ Advanced Cardiac Life Support (ACLS) 2 Day Course, Classroom based
- ⇒ Heartcode Advanced Cardiac Life Support (ACLS) (blended)
- ⇒ ACLS Experienced Provider

*Resuscitation training is provided to staff as identified in the SVUH resuscitation training policy and offered to other staff who express an interest to attend as agreed with their line manager.*

*The purpose of resuscitation training is to provide course participants with the knowledge and skills required to recognise when a person is in cardiac arrest, to activate the cardiac arrest team and to provide high quality CPR (cardiopulmonary resuscitation) and to use an AED (automated external defibrillator).*

*Course participants are taught how to recognise and treat a person who is choking. Course content varies depending on the level of training required and the role of the staff member within the organisation. American Heart Association / Irish Heart Foundation (AHA/IHF) certificates are awarded for the majority of courses as well as CEUs from the Nursing and Midwifery Board of Ireland and CPD points from the Royal College of Surgeons of Ireland.*

# Heartsaver CPR & AED Course

## About

Classroom, video-based, Instructor led course that teaches Adult and Child CPR and AED use, Infant CPR, and how to revive choking in Adults and infants.

The course teaches skills with the AHA's research-proven practice-while-watching techniques which allows the instructor to observe the student, provide feedback and guide the students learning of skills. No written exam.

## Who is it aimed towards?

Mandatory for all HCAs, Phlebotomists and Medical Social Workers, optional for Porters and Security.

## Who is eligible?

Course is for SVUH ancillary staff only

## How is it delivered?

Blended learning. Pre-course theory and test (84%) and instructor led skills practice and skills assessment.



## Number of places available:

6 per class

## Frequency:

Once or Twice a month

**Duration:** Online 1.5 hours and Practical 1 hour

## For more details contact:

**Training Bookings:** (01) 2214484; [resussvuh@svhg.ie](mailto:resussvuh@svhg.ie)

**Resuscitation Training Officers:** (01) 2215292 or (01) 2215996; [resussvuh@svhg.ie](mailto:resussvuh@svhg.ie)

# Basic Life Support (BLS) Healthcare Provider (HCP)

## About

Classroom-based, instructor-led, DVD practice-while-watching course. The course covers adult, child and infant, CPR, choking and use of Automated External Defibrillator (AED) and bag-valve-mask device (BVM). Successful completion of multiple choice question test (84%) and skills assessment required. An American Heart Association/Irish Heart Foundation certificate is issued and is valid for two years.

## Who is it aimed towards?

Mandatory training. Required by all clinical staff with direct patient contact.

## Who is eligible?

All clinical staff with direct patient contact.

## How is it delivered?

Blended. Pre-course theory and test (84%) and instructor led skills practice and skills assessment.



## Number of places available:

6 per class

## Frequency:

Several times per week

## Closing Date:

Not applicable

## Duration:

Online component approx. 1 ½ hours. Skills practice and skills assessment approx. 1 hour

NMBI  
4 CEUs  
RCSI  
4.5 CPDs

## For more details contact:

**Training Bookings:** (01) 2214484; [resussvuh@svhg.ie](mailto:resussvuh@svhg.ie)

**Resuscitation Training Officers:** (01) 2215292 or (01) 2215996; [resussvuh@svhg.ie](mailto:resussvuh@svhg.ie)

# ACLS Experienced Provider

## About

The aim of the ACLS Experienced Provider (ACLS-EP) Course is to improve outcomes in the complex cardiovascular, respiratory and other (ie metabolic, toxicological) emergencies by expanding on core ACLS guidelines and encouraging critical thinking and decision making strategies. Through instruction and active participation in case based scenarios, learners enhance their skills in the differential diagnosis and treatment of pre arrest or post arrest patients.

## Who is it aimed towards?

The course is for seasoned/experienced healthcare providers who are proficient in performing BLS and ACLS skills, and interpreting ECGs, and understanding ACLS pharmacology and who regularly lead or participate in emergency assessment and treatment of peri arrest or post arrest patients.

## Course prerequisites:

A current AHA BLS Certificate. Desirable current ACLS Provider Courses. Please note anyone who does not hold a current in date ACLS Certificate MUST pass all ACLS Provider skills assessments in order to proceed further in the ACLS EP Course.

## How is it delivered?

Classroom-based, instructor-led with aid of DVD



### Number of places available:

18 places available

### Frequency:

Twice yearly

### Closing Date:

Not applicable

### Duration:

Approximately 7 hours

NMBI  
7 CEUs

### For more details contact:

**Training Bookings:** (01) 2214484; [resussvuh@svhg.ie](mailto:resussvuh@svhg.ie)

**Resuscitation Training Officers:** (01) 2215292 or (01) 2215996; [resussvuh@svhg.ie](mailto:resussvuh@svhg.ie)



# Advanced Cardiac Life Support (ACLS) 2 Day Course, Classroom based

## About

Classroom-based, instructor-led theory and practice of peri arrest and cardiac arrest scenarios. Acute coronary syndromes, stroke, tachycardias, bradycardias and cardiac arrest scenarios are presented. Successful completion of multiple choice questions (84%) and skills assessment required. An American Heart Association/Irish Heart Foundation certificate is issued and is valid for two years.

## Who is it aimed towards?

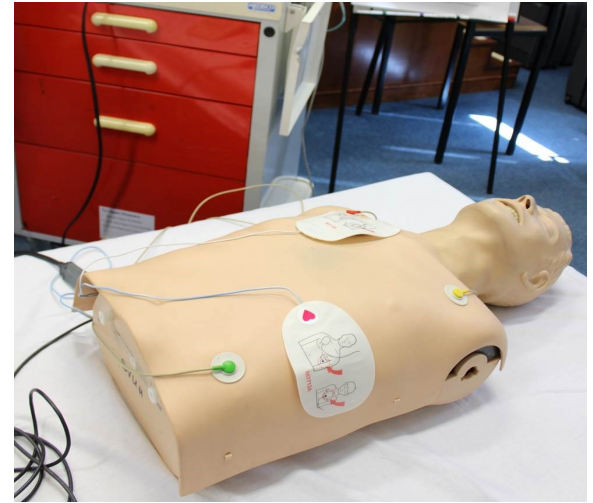
Mandatory training for those carrying cardiac arrest bleep and for staff working in Emergency Department, critical care areas and anaesthetics. Suitable for those who have never completed ACLS before or who are currently out of date with their ACLS certificate.

## Who is eligible?

Staff carrying cardiac arrest bleep and for staff working in Emergency Department, critical care areas and anaesthetics. In date BLS is required to attend ACLS course.

## How is it delivered?

Classroom-based, instructor led, practical. Pre-course reading required.



## Number of places available:

18 places available

## Frequency:

Approximately 4 course per annum

## Closing Date:

Not applicable

## Duration:

Approximately 22 hours

NMBI  
18 CEUs  
RCSI  
16 CPDs

## For more details contact:

**Training Bookings:** (01) 2214484; [resussvuh@svhg.ie](mailto:resussvuh@svhg.ie)

**Resuscitation Training Officers:** (01) 2215292 or (01) 2215996; [resussvuh@svhg.ie](mailto:resussvuh@svhg.ie)

# Heartcode Advanced Cardiac Life Support (ACLS) (blended)

## About

Blended course combining classroom-based, instructor-led practice and pre-course online theory. Content covers peri arrest and cardiac arrest scenarios. Acute coronary syndromes, stroke, tachycardias, bradycardias and cardiac arrest scenarios are presented. Successful completion of multiple choice questions (84%) and skills assessment required. An American Heart Association/Irish Heart Foundation certificate is issued and is valid for two years

## Who is it aimed towards?

Mandatory training for those carrying cardiac arrest bleep and for staff working in Emergency Department, critical care areas and anaesthetics. Suitable for those who are due to refresh their training.

## Who is eligible?

- ♦ Staff carrying cardiac arrest bleep and for staff working in Emergency Department, critical care areas and anaesthetics.

## How is it delivered?

Blended learning, Online Course to be completed before a classroom based, instructor-led practical.



## Number of places available:

18 places available

## Frequency:

Approximately 7 courses per annum

## Closing Date:

Not applicable

## Duration:

Approximately 12 hours Online learning, 6 hours classroom led practical

NMBI  
6 CEUs  
RCSI  
16 CPDs

## For more details contact:

**Training Bookings:** (01) 2214484; [resussvuh@svhg.ie](mailto:resussvuh@svhg.ie)

**Resuscitation Training Officers:** (01) 2215292 or (01) 2215996; [resussvuh@svhg.ie](mailto:resussvuh@svhg.ie)

# Careful Nursing Philosophy & Professional Practice Model- Theory & Practice Programme

## About

This course introduces the nurse to Careful Nursing in SVUH. This is an Irish Philosophy and a Professional Practice Model of nursing care created by Dr. Therese Meehan, and applied to the acute care setting.

The theory focuses on the Philosophy and Professional Practice Model, concentrating on two dimensions called the 'Therapeutic Milieu' and 'Practice Competence and Excellence'. It also introduces the use of standardised nursing languages called NANDA-I, NOC and NIC.

The workshop introduces care planning to develop skills and knowledge on identifying Nursing Diagnosis using NANDA-I, outcomes using NOC and evidence based interventions using NIC.

## Who is it aimed towards?

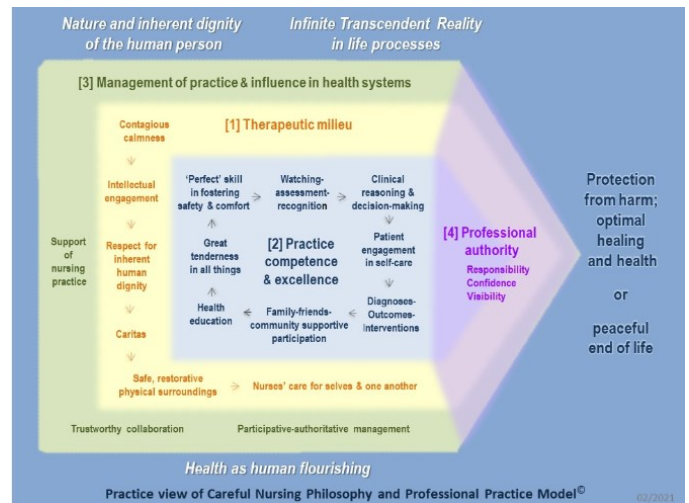
All nursing staff, including nursing students, working in the clinical areas within the organisation.

## How is it delivered?

Blended learning; Combination of on-line learning and a four hour workshop.

## Refresher course

Careful Nursing refresher training session available for the nursing staff who have completed their Careful Nursing session in the previous years. The ward CNMs can email the staff details to the NPD careful nursing team



## Number of places available:

6-20 places available

## Frequency:

Bi-Monthly

## Closing Dates:

Two weeks prior to workshop in order to complete the learning units before attending

## Duration:

Learning Units online 5 hours total and a 3 hour Workshop

8 CPD hours  
awarded in  
accordance with  
NMBI guidance

**For more details contact:** [npd@svhg.ie](mailto:npd@svhg.ie) inserting the topic in the subject line.

# Enhanced Care Programme

## About

The aim of this course is to assist Registered General Nurses (RGNs) in developing their knowledge, skills and attitude to care for patients requiring an enhanced level of care. It focuses on developing an understanding of the evidence-based principles and practices of Enhanced Care, as well as how to effectively delegate care to Healthcare Assistants (HCAs) within this model.

## Who is it aimed towards?

All nursing grades.

## How is it delivered?

All theoretical content is completed by the participant through self-directed learning units on MyView.

The on-line learning units are

- ◆ LU-Nurse-00107 Fundamentals of Delirium
- ◆ LU-Nurse-00213 Falls and Harmful Falls-Prevention & Management
- ◆ LU-Nurse-00232 Intentional Rounding
- ◆ LU-Nurse-00285 Enhanced Care



ENHANCED CARE PATHWAY

AFFIX PATIENT LABEL HERE

ENHANCED CARE PLAN – DECISION ALGORITHM				
SECTION A	IMMEDIATE ACTIONS TO ASSESS & REDUCE RISK			
	To be completed by the nurse assessor initiating the Enhanced Care Pathway PLEASE TICK (✓) Yes, No or N/A			
IMMEDIATE ACTIONS	Yes	No	N/A	SUBSEQUENT ACTIONS
Recent medical and/or medication review?				If No - request review within 6 hours and document in Health Care Record (HCR)
Pain assessment completed?				If NO - complete pain assessment
Delirium screen (4 AT) completed?				If NO - complete 4AT Delirium
Does the patient have a diagnosis of dementia?				If NO - complete 4AT Delirium
Have appropriate referrals been made to the MDT? Referral Sent To: Date Sent:				If NO - make referral, document in HCR and use behaviour observational chart to advise on plan
Has the falls risk assessment been completed?				If NO - complete risk assessment and initiate care bundle if indicated
Has the patient had a fall in the last 12 months?				If YES - give Preventing and Managing Falls Information Leaflet PIL-ORG-25
Is the patient at risk of walking around / wandering?				If YES - consider transferring patient to high visible/ restricted access area
Have environmental concerns been assessed?				If NO - reduce environmental stimuli- noise, consider moving to a more observable position
Is there a current substance misuse / substance withdrawal problem? e.g. nicotine, alcohol, recreational drugs				If YES - inform Consultant and refer to appropriate services, document in the HCR
Is a mental health assessment required? Referral Sent To: Date Sent:				If YES - inform Consultant and contact Psychiatry. Ensure response time and advice is documented in the HCR

## Number of places available:

Unlimited

## Frequency:

As service require

## Closing Dates:

N/A

## Duration:

Learning Units online 8hr total

**For more details contact:** [npd@svhg.ie](mailto:npd@svhg.ie) inserting the topic in the subject line.

# Clinical Handover

## About

The Clinical Handover learning unit is designed to enhance the learner's knowledge, understanding, and ability to perform an effective handover. This learning unit has been developed to support the implementation of recognised best practice communication tools. Such communication tools will enhance handover by providing staff with the necessary knowledge and skills to participate in an effective safe handover.

## Who is it aimed towards?

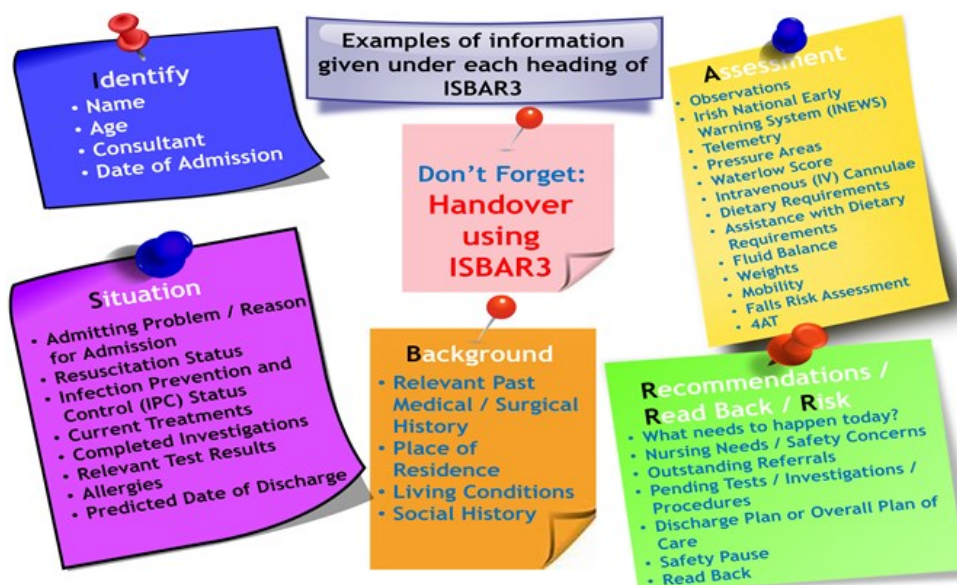
All nursing grades.

## Who is eligible?

All registered nurses and 4th year Intern BSc nursing students working in SVUH.

## How is it delivered?

Complete the on-line learning unit:  
LU-Nurse-00184 Nursing Clinical Handover



**Number of places available:**  
Unlimited

**Frequency:**  
Open access

**Closing Date:**  
N/A  
contact NPD for further details

**Duration:**  
1 hours SDL online learning

**For more details contact:** [npd@svhg.ie](mailto:npd@svhg.ie) inserting the topic in the subject line.



# Health Assessment

## About

The program is designed to enhance participants' knowledge, skills and ability in health assessment and documentation to post-registration nurses in St. Vincent's University Hospital. Successful completion of this program will enhance the quality patient care within the philosophy of St. Vincent's University Hospital and the Nurse Education Centre.

## Who is it aimed towards?

All nursing grades.

## Who is eligible?

All registered nurses and 4th year Intern BSc nursing students working in SVUH .

## How is it delivered?

Complete the on-line learning unit:  
LU-Nurse-00119 Health Assessment  
The learning unit incorporates a number of videos to aid in the assessment process and uses SVUH documentation.

Look	Listen	Feel	OLDCART
			

## Number of places available:

Unlimited

## Frequency:

Open access

## Closing Date:

N/A

## Duration:

3 hours SDL online learning

## For more details contact:

**Coordinator:** Jody O'Reilly, CNM2, (01) 2214232; [jody.oreilly@svuh.ie](mailto:jody.oreilly@svuh.ie)

# Safe Medication Administration Programme for Nurses

## About

The Safe Medication Administration Programme is three learning units and a competency booklet, aimed at enhancing nurses' knowledge, skills and understanding of evidence-based principles and practice in the safe administration of medications including controlled drugs.

## Who is it aimed towards?

All registered general nurses new to SVUH.

## Who is eligible?

All registered nurses working in SVUH.

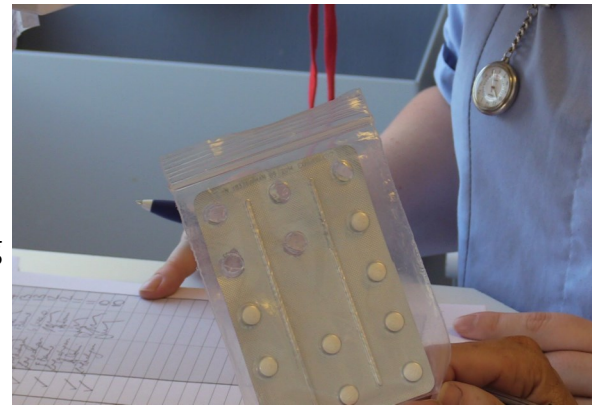
## How is it delivered?

- Request the Oral Medication round assessment booklet from [npd@svhg.ie](mailto:npd@svhg.ie)
- Collect the Oral Medication round assessment booklet from collection box in the Nurse Education Centre reception.

Complete the three on-line learning units:

- ◆ LU-Nurse-00105 Safe Medication Administration for Nurses
- ◆ LU-Nurse-00109 Safe use of Controlled Drugs
- ◆ HSELand 'Medication Management'

Undertake 10 supervised Medication rounds, completing the Oral Medication round assessment booklet. Return the completed booklet to NEC reception and submit all digital (PDF format) certificates from the 3 on-line units (email) to the [npd@svhg.ie](mailto:npd@svhg.ie). Receive a digital certificate of competency.



## Number of places available:

Unlimited

## Frequency:

Open access

## Closing Date:

N/A

## Duration:

5 Hours online learning followed by completion of clinical competency

**For more details contact:** [npd@svhg.ie](mailto:npd@svhg.ie) inserting the topic in the subject line.

# Intravenous Medication Administration Programme

## About

This course focuses on best practice and SVUH policy on the storage, preparation and administration of intravenous medication by nurses. It also examines the routes of intravenous administration (PVC, CVAD) and applies local policy in accessing and administering medication via these routes.

## Who is it aimed towards?

Staff Nurses who are required to obtain competence in the administration of Intravenous Medications .

## Who is eligible?

Registered nurses.

## How is it delivered?

All the theory is undertaken by the participant through self directed learning units via MyView and followed up with a practical workshop.

The on-line learning units are

- LU-Nurse-00101 Aseptic Non Touch Technique ANTT®
- LU-Nurse-00102 Intravenous Medication Administration Policy and Preparation of Intravenous Medications
- LU-Nurse-00103 Central Venous Access Devices (CVAD)
- LU-Nurse-00104 Intravenous Medication Calculations

All staff undertaking the IV Medication workshop are also required to complete: National Anaphylaxis Education Programme for healthcare professionals on HSEland. Clinical competence is to be achieved in order to obtain certification.



## Number of places available:

12 places available

## Frequency:

Monthly

## Closing Date:

Two weeks prior to workshop in order to complete the learning units before attending

## Duration:

5 hours SDL online learning followed by 4 hour workshop  
8 weeks to complete clinical competency

**18 CPD hours  
awarded by the  
NMBI**

## For more details contact:

**Co-ordinator:** Maria Slattery, NT, (01) 221 4348 m.slattery@svuh.ie  
Or Jody O'Reilly, CNM2, (01) 221 4232; jody.oreilly@svuh.ie

**Bookings:** Secretary, (01) 2214716

# Venepuncture and Cannulation Workshop

## About

The aim of this course is to assist the RGN in developing the skills necessary to perform Venepuncture and Cannulation in clinical practice.

## Who is eligible?

- This course is suitable for registered nurses who have completed an approved educational programme on the Management and Administration of Intravenous Medication (SVUH Certificate or Dublin Academic Teaching Hospitals - DATHs).
- Have obtained approval to undertake the programme from Clinical Nurse Manager (CNM) / Assistant Director of Nursing (ADON).

## How is it delivered?

Blended learning approach, theoretical component of this programme completed on HSEland prior to workshop attendance.

They are listed as follows on HSEland:

- AMRIC Prevention of Peripheral and Central Venous Catheter related infections
- Performing Peripheral Intravenous Cannulation on an adult.
- Performing Venepuncture on an Adult

On site workshop followed by competency assessment in clinical area. Full certification is awarded following completion of clinical competence.



## Number of places available:

6 places available

## Frequency:

bi-monthly

## Closing Date:

Two weeks prior to commencement

## Duration:

3.5 hour workshop

**NMBI**  
**9 CEU's**

## For more details contact:

**Co-ordinator:** Nwabueze Nwankire, Ph: 01-2214854, Email: nnwankire@svhg.ie

**Bookings:** Secretary, (01) 2214716

# National Frailty Education Programme. The Fundamentals of Frailty

## About

The aim of the National Frailty Education Programme (NFEP) is to provide healthcare staff with an enhanced understanding of frailty and an awareness of frailty assessment, thereby ensuring earlier recognition of frailty, improved healthcare management, and better health outcomes for older adults and persons living with frailty

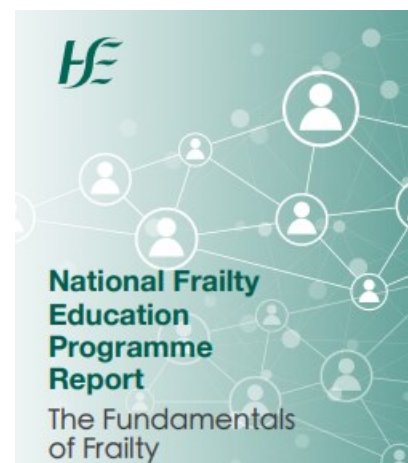
## Who is it aimed towards?

All staff working in St. Vincent's University Hospital

## How is it delivered?

In-house, face-to-face classroom delivery by experts in education, and experts in clinical practice caring for older persons, and persons with frailty. The study day is based 8 modules in the HSE Land National Frailty Education Programme covering frailty, delirium, cognition, falls, problematic & appropriate polypharmacy, continence, nutrition and comprehensive geriatric assessment.

This programme is also run in other venues throughout the year: St Michaels Hospital, St Columcilles Hospital, Royal Hospital Donnybrook, Knockrobin, Leopardstown park hospital and Clonskeagh Hospital.



## Number of places available:

20 places available

## Frequency:

3 times a year in house  
Other dates externally

## Closing Date:

One week prior to commencement

## Duration:

1 day

8 CPD hours  
awarded by the  
NMBI

## For more details contact:

**Co-ordinator:** Nwabueze Nwankire, Ph: 01-2214854, Email: nnwankire@svhg.ie

**Bookings:** Secretary, (01) 2214716



# Preceptorship in practice workshop

## About

This workshop provides registered nurses with the skills to facilitate the preceptorship and assessment of BSc Nursing students and Internationally Educated Nurses (IENs) using the relevant assessment documents i.e. National Competency Assessment Document for students, and Competence Assessment Tool for IENs who Require a Period of Adaptation and Assessment. The online component is updated every 2 years, the workshop is just once off.

## Who is it aimed towards?

All Registered Nurses working in St. Vincent's University Hospital.

## Who is eligible?

A Registered Nurse with at least 6 months post registration experience (ideally 12 months for IENs).

## How is it delivered?

This is a blended learning approach. The online course 'Preceptorship in Practice' on HSELand must be completed prior to the workshop. The online course contains 3 modules and an assessment, it will take approximately 70 minutes. This is followed up with a 2.5 hour practical workshop facilitated by Clinical Placement Co-ordinators (CPC's).



## Preceptorship in Practice

★★★★☆ 4 Reviews [Skip to Session](#)

The aim of this programme is to provide you with the relevant knowledge to be able to supervise and support a student during their practice placement.

Upon completion of this eLearning programme, learners are advised to attend a developmental workshop according to their local HEI and AHCP PPPGs.

This developmental workshop is generally coordinated by the local Centre's for Nursing and Midwifery Education (CNME's), Centre's for Midwifery Education (CME's), Centre of Children's Nurse Education (CCNE), or Centre's for Learning and Development (CLD's).

Learning Type: Programme

Available Languages: • English

Duration: 70 minutes

Support Contact: ONMSD: Glory George (Project Lead)  
glory.george@hse.ie

Click on the Enrol button to enrol on the complete group of learning modules listed below.

Session(s): Preceptorship in Practice - Session1

Seats: Unlimited

Module 1: Introducing Preceptorship

Module 2: Supporting a Student on a Placement

Module 3: Supporting a Student Who is Not Achieving Competency

Preceptorship in Practice - Assessment

## Number of places available:

12 places available

## Frequency:

On-going . Course dates are circulated to the clinical areas in January.

## Closing Date:

Two weeks prior to the workshop date

## Duration:

75 mins SDL to complete online pre requisite, followed by a 2.5hr workshop.

**3 CPD hours  
awarded by the  
NMBI**

## For more details contact:

**Bookings:** Clinical Placement Co-ordinator: Emma O'Callaghan  
Phone: 01 2215345 email: emmaocallaghan@svhg.ie  
Aoife Waldron Phone: 01 2215345 email: a.waldron@svuh.ie

Or your ward CPC

## Nurse Education & Practice Development Training for Nursing and HCA

For more information on CPD programmes and short courses available please see the nurse education and practice development prospectus, available on the intranet or contact the Nurse Education Centre on ext.4716.

**It is the responsibility of staff to ensure they keep a portfolio of their own training records.**  
These must be available to submit on request to your line manager.

Nursing and HCA Mandatory and Health & Safety Training					
Training	Renewal	Duration	Access	Date completed	Date due next
Hand Hygiene online training	2 years	15 mins	<a href="#">MyView- Mandatory Hub</a>		
Fire Safety online training	2 years	1 hr	<a href="#">MyView- Mandatory Hub</a>		
Manual Handling or Patient Handling training module	3 years	45 mins	<a href="#">MyView- Mandatory Hub</a>		
	3 years	2hrs	<a href="#">MyView- Mandatory Hub</a> <i>Role specific</i>		
An Introduction to Children First	3 years	1 ½ hrs	<a href="#">HSELand</a> Submit cert to <a href="mailto:I&amp;d@svhg.ie">I&amp;d@svhg.ie</a>		
Data protection Everyone's Responsibility	2 years	30 mins	<a href="#">MyView- Mandatory Hub</a>		
General Cyber Security	2 years	30 mins	<a href="#">MyView- Mandatory Hub</a>		
Introduction to behaviours that challenge	2 years	1hr	<a href="#">MyView- Mandatory Hub</a> <i>Role specific</i>		
Be sharp Be safe	2 years	30 mins	<a href="#">MyView- Mandatory Hub</a> <i>Role specific</i>		
Healthcare Risk Waste Management	2 years	30 mins	<a href="#">MyView- Mandatory Hub</a> <i>Role specific</i>		
Medical Gas for nursing, porters & HCA	1 year	30 minutes	<a href="#">MyView- Mandatory Hub</a> <i>Role specific</i>		
Basic Life Support or Heartsaver	2 years	3hrs total	Mandatory Training Admin: Ext. 4484 or <a href="mailto:deirdreorjordan@svhg.ie">deirdreorjordan@svhg.ie</a>		
Essential Blood Transfusion Practice	3 years	110 minutes	<a href="#">HSELand</a> . Submit cert to <a href="mailto:bfox@svhg.ie">bfox@svhg.ie</a>		
HSE Making Every Contact Count	Once off	3 hrs	<a href="#">HSELand</a>		
HSE Dignity at Work (Revised 2022)	3 years	40 mins	<a href="#">HSELand</a>		
HSE Open Disclosure: Module 1 Communicating effectively through Open Disclosure	Once off	40 mins	<a href="#">HSELand</a>		
Safety Intervention Training <i>Recommended</i>	2 years	1 day	L&OD Ext. 6026		
National frailty education programme <i>Recommended</i>	Once off	1 day	Nurse Education Centre Phone Ext. 4716		
Final Journeys <i>Recommended</i>	Once off	1day	Maureen O'Connell Ext. 4080		

Nursing Continuing Professional Development Required Training				
Training	Renewal	Duration	Access	Date completed
Nurse Induction	Once off	4 hrs Submit cert to <a href="mailto:jody.oreilly@svuh.ie">jody.oreilly@svuh.ie</a>	<a href="#">MyView</a> - Mandatory Hub ➤ LU-NURSE-00128	
HSE Irish National Early Warning System (INEWS): Nursing/HSCP Focus	Once off	1 hr	<a href="#">HSELand</a>	
HSE Introduction to Sepsis Management for Adults including Maternity	3 years	1 hr	<a href="#">HSELand</a>	
Philips Intrepid Defibrillator Training	Once off	1 hr	<a href="#">MyView</a> - Mandatory Hub <i>Role specific</i>	
Irish Maternity Early Warning System (IMEWS) (area specific)	Once off	1 hr	<a href="#">HSELand</a>	
MUST Training (Malnutrition Universal Screening Tool)	Once off	45 mins	<a href="#">HSELand</a>	
Nutritional Screening a must for Healthcare	Once off	1hr	<a href="#">HSELand</a>	
Quality Care Metrics Training	Once off	e-learning 30 mins	<a href="#">HSELand</a>	
HSE AMRIC Prevention of peripheral and central venous catheter related infections	Once off	e-learning 30 mins	<a href="#">HSELand</a>	
Careful Nursing Programme	Once off	e-learning & 3 hr workshop Nurse Education Centre: Ext 4716	<a href="#">MyView</a> - Nursing Hub ➤ LU-NURSE-00153 ➤ LU-NURSE-00154 ➤ LU-Nurse-00155 ➤ LU-Nurse-00156 ➤ LU-Nurse-00157	
Enhanced Care	Once off	3hrs e-learning Submit certs to <a href="mailto:npd@svhg.ie">npd@svhg.ie</a>	<a href="#">MyView</a> - Nursing Hub ➤ LU-NURSE-00107 ➤ LU-NURSE-00213 ➤ LU-Nurse-00232 ➤ LU-Nurse-00285	
Clinical Handover	Once off	30 mins	<a href="#">MyView</a> - Nursing Hub ➤ LU-NURSE-00184	
Health Assessment	Once off	2.5 hrs	<a href="#">MyView</a> - Nursing Hub ➤ LU-NURSE-00119	
Medication Safety	Once off	3.5 hrs e-learning & Competency Assessment Nurse Education Centre: Ext 4716	<a href="#">MyView</a> - Nursing Hub ➤ LU-NURSE-00105 ➤ LU-NURSE-00109 ➤ HSELand Medication management	
IV Medication Administration	Once off	5hrs e-learning & 4 hr workshop	Nurse Education Centre: Ext. 4716	
Venepuncture & Cannulation	Once off	3hrs e-learning & 4 hr workshop	<a href="#">HSELand</a> & Nurse Education Centre: Ext. 4716	
Preceptorship	2 years (online)	1hr e-learning & 2 hr workshop	<a href="#">HSELand</a> & Nurse Education Centre: Ext. 4716	

\*Some of the above training is subject to maintaining competency, if competency lapses repeat of the programme may be required.

Q-Pulse Ref. No: STAFF-ORG-97 Printing Ref. No: (If applicable)	Active Date: 25.09.2025	Page 2 of 2	Version No: 4
--	----------------------------	-------------	---------------